

For Research Use Only

CoraLite®594-conjugated NCALD Monoclonal antibody



Catalog Number:CL594-66088

Basic Information

Catalog Number: CL594-66088	GenBank Accession Number: BC036098	Purification Method: Protein A purification
Size: 100ul , Concentration: 1000 µg/ml by Nanodrop;	GeneID (NCBI): 83988	CloneNo.: 6B4E10
Source: Mouse	Full Name: neurocalcin delta	Recommended Dilutions: IF 1:50-1:500
Isotype: IgG2a	Calculated MW: 193 aa, 22 kDa	Excitation/Emission maxima wavelengths: 593 nm/614 nm
Immunogen Catalog Number: AG18760		

Applications

Tested Applications: IF	Positive Controls: IF : HeLa cells,
Species Specificity: human, mouse, pig	

Background Information

NCALD(Neurocalcin-delta) is a member of the EF-hand calcium-binding protein superfamily.It may be involved in the calcium-dependent regulation of rhodopsin phosphorylation.It is a high-affinity Ca²⁺ sensor (Kd of approx. 0.6 uM), which is most abundantly expressed in the Purkinje cells of the cerebellum(PMID:11964161).This antibody is specific to NCALD.

Storage

Storage:
Store at -20°C. Avoid exposure to light.
Storage Buffer:
PBS with 50% Glycerol, 0.05% Proclin300, 0.5% BSA, pH 7.3.
Aliquoting is unnecessary for -20°C storage

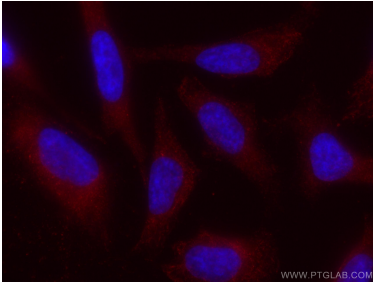
For technical support and original validation data for this product please contact:

T: 1 (888) 4PTGLAB (1-888-478-4522) (toll free
in USA), or 1(312) 455-8498 (outside USA)

E: proteintech@ptglab.com
W: ptglab.com

This product is exclusively available under Proteintech Group brand and is not available to purchase from any other manufacturer.

Selected Validation Data



Immunofluorescent analysis of (-20°C Methanol) fixed HeLa cells using CoraLite®594 NCALD antibody (CL594-66088, Clone: 6B4E10) at dilution of 1:100.