

For Research Use Only

CoraLite®594-conjugated Lamin B1 Monoclonal antibody



Catalog Number: CL594-66095 **2 Publications**

Basic Information

Catalog Number: CL594-66095	GenBank Accession Number: BC012295	Purification Method: Protein G purification
Size: 100ul , Concentration: 1000 µg/ml by Nanodrop;	GeneID (NCBI): 4001	CloneNo.: 3C10G12
Source: Mouse	Full Name: lamin B1	Recommended Dilutions: IF 1:50-1:500
Isotype: IgG1	Calculated MW: 66 kDa	Excitation/Emission maxima wavelengths: 593 nm / 614 nm
Immunogen Catalog Number: AG20522		

Applications

Tested Applications: FC (Intra), IF	Positive Controls: IF : HepG2 cells,
Cited Applications: IF	
Species Specificity: human, mouse, rat	
Cited Species: human	

Background Information

Lamins are components of the nuclear lamina, a fibrous layer on the nucleoplasmic side of the inner nuclear membrane, which is thought to provide a framework for the nuclear envelope and may also interact with chromatin. The nuclear lamina consists of a two-dimensional matrix of proteins located next to the inner nuclear membrane. The lamin family of proteins make up the matrix and are highly conserved in evolution. During mitosis, the lamina matrix is reversibly disassembled as the lamin proteins are phosphorylated. Vertebrate lamins consist of two types, A and B. This gene encodes one of the two B type proteins, B1. This protein is not suitable for samples where the nuclear envelope has been removed. The antibody is conjugated with CL594, Ex/Em 593 nm/614 nm.

Notable Publications

Author	Pubmed ID	Journal	Application
Chunli Tan	33508878	Mol Oncol	IF
Shanshan Ma	35525026	Redox Biol	IF

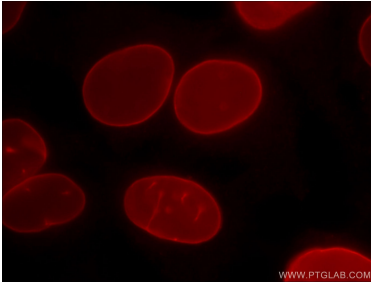
Storage

Storage:
Store at -20°C. Avoid exposure to light. Stable for one year after shipment.
Storage Buffer:
PBS with 50% Glycerol, 0.05% Proclin300, 0.5% BSA, pH 7.3.
Aliquoting is unnecessary for -20°C storage

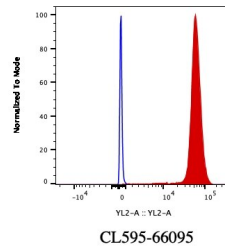
For technical support and original validation data for this product please contact:
T: 1 (888) 4PTGLAB (1-888-478-4522) (toll free in USA), or 1(312) 455-8498 (outside USA)
E: proteintech@ptglab.com
W: ptglab.com

This product is exclusively available under Proteintech Group brand and is not available to purchase from any other manufacturer.

Selected Validation Data



Immunofluorescent analysis of (-20°C Ethanol) fixed HepG2 cells using CoraLite®594 Lamin B1 antibody (CL594-66095, Clone: 3C10G12) at dilution of 1:200.



1×10^6 HeLa cells were stained with 0.2 ug CoraLite®594 Anti-Human Lamin B1 (CL594-66095, Clone: 3C10G12) (red), or 0.2 ug CoraLite®594 Mouse IgG1 Isotype Control (CL594-66360, Clone: T1F8D3F10) (blue). Cells were fixed and permeabilized with Transcription Factor Staining Buffer Kit (PF00011).