

For Research Use Only

# CoraLite®594-conjugated RBP4 Monoclonal antibody

Catalog Number:CL594-66104



## Basic Information

<b>Catalog Number:</b> CL594-66104	<b>GenBank Accession Number:</b> BC020633	<b>Purification Method:</b> Protein A purification
<b>Size:</b> 100ul , Concentration: 1000 ug/ml by Nanodrop;	<b>GeneID (NCBI):</b> 5950	<b>CloneNo.:</b> 1D12B11
<b>Source:</b> Mouse	<b>UNIPROT ID:</b> P02753	<b>Recommended Dilutions:</b> IF-P 1:50-1:500 IF/ICC 1:50-1:500
<b>Isotype:</b> IgG2a	<b>Full Name:</b> retinol binding protein 4, plasma	<b>Excitation/Emission maxima wavelengths:</b> 588 nm / 604 nm
<b>Immunogen Catalog Number:</b> AG19295	<b>Calculated MW:</b> 201 aa, 23 kDa	
	<b>Observed MW:</b> 23 kDa	

## Applications

<b>Tested Applications:</b> IF/ICC, IF-P	<b>Positive Controls:</b> IF-P : human liver cancer tissue, IF/ICC : HepG2 cells,
<b>Species Specificity:</b> human	

## Background Information

RBP4 (retinol-binding protein 4) is a carrier protein that transports vitamin A (retinol) from the liver to the peripheral tissues. Synthesized primarily by hepatocytes and adipocytes as a 21 kDa non-glycosylated protein, RBP4 is secreted into the circulation as a retinol-RBP4 complex. In plasma the RBP4-retinol complex is bound to transthyretin (TTR), which prevents prevent kidney filtration. Two truncated forms of RBP4, RBP4-L (truncated at Leu-183) and RBP4-LL (truncated at Leu-182 and Leu-183), exist by proteolytic process. RBP4-L and RBP4-LL, which do not bind TTR, are normally excreted into the urine but accumulate in the serum during renal failure. Urinary RBP4 has been reported as marker for glomerular disease. RBP4 also was identified as an adipokine that elevated in some INS-resistant states. Measurement of serum RBP4 could be used to assess the risk of INS resistance, type 2 diabetes, obesity, and cardiovascular disease. (18752671, 16034410)

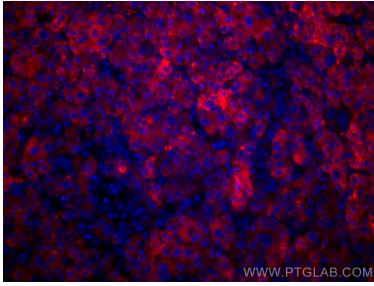
## Storage

**Storage:**  
Store at -20°C. Avoid exposure to light. Stable for one year after shipment.  
**Storage Buffer:**  
PBS with 50% Glycerol, 0.05% Proclin300, 0.5% BSA, pH 7.3.  
**Aliquoting is unnecessary for -20°C storage**

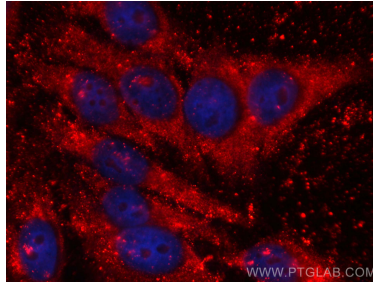
For technical support and original validation data for this product please contact:  
T: 1 (888) 4PTGLAB (1-888-478-4522) (toll free in USA), or 1(312) 455-8498 (outside USA)  
E: [proteintech@ptglab.com](mailto:proteintech@ptglab.com)  
W: [ptglab.com](http://ptglab.com)

This product is exclusively available under Proteintech Group brand and is not available to purchase from any other manufacturer.

## Selected Validation Data



Immunofluorescent analysis of (4% PFA) fixed human liver cancer tissue using CoraLite®594 RBP4 antibody (CL594-66104, Clone: 1D12B11) at dilution of 1:200.



Immunofluorescent analysis of (-20°C Ethanol) fixed HepG2 cells using CoraLite®594 RBP4 antibody (CL594-66104, Clone: 1D12B11) at dilution of 1:100.