

For Research Use Only

CoraLite®594-conjugated PDH E1 Alpha Monoclonal antibody



Catalog Number:CL594-66119

Featured Product

Basic Information

| | | |
|----------------------------------------------------------------|-----------------------------------------------------------------|-------------------------------------------------------------------|
| Catalog Number: CL594-66119 | GenBank Accession Number: BC002406 | Purification Method: Protein A purification |
| Size: 100ul , Concentration: 1000 µg/ml by Nanodrop; | GeneID (NCBI): 5160 | CloneNo.: 2B3C10 |
| Source: Mouse | Full Name: pyruvate dehydrogenase (lipoamide) alpha 1 | Recommended Dilutions: WB 1:500-1:2000 |
| Isotype: IgG2a | Calculated MW: 43 kDa | Excitation/Emission maxima wavelengths: 588 nm / 604 nm |
| Immunogen Catalog Number: AG12556 | Observed MW: 43 kDa | |

Applications

Tested Applications:

FC (Intra), WB

Species Specificity:

human

Positive Controls:

WB : HepG2 cells, HEK-293 cells

Background Information

PDHA1(Pyruvate dehydrogenase E1 component subunit alpha, somatic form, mitochondrial) is also named as PHE1A.It is one of the 3 enzymes of the pyruvate dehydrogenase complex which is a nuclear-encoded mitochondrial matrix multienzyme complex that provides the primary link between glycolysis and the tricarboxylic acid (TCA) cycle by catalyzing the irreversible conversion of pyruvate into acetyl-CoA(PMID:7853374).It has 4 isoforms produced by alternative splicing.Defects in PDHA1 are a cause of pyruvate dehydrogenase E1-alpha deficiency (PDHAD) and X-linked Leigh syndrome (X-LS).

Storage

Storage:

Store at -20°C. Avoid exposure to light. Stable for one year after shipment.

Storage Buffer:

PBS with 50% Glycerol, 0.05% Proclin300, 0.5% BSA, pH 7.3.

Aliquoting is unnecessary for -20°C storage

*** 20ul sizes contain 0.1% BSA

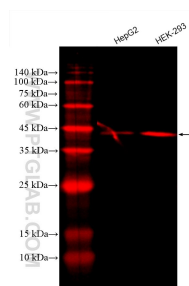
For technical support and original validation data for this product please contact:

T: 1 (888) 4PTGLAB (1-888-478-4522) (toll free in USA), or 1(312) 455-8498 (outside USA)

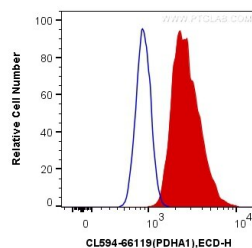
E: proteintech@ptglab.com
W: ptglab.com

This product is exclusively available under Proteintech Group brand and is not available to purchase from any other manufacturer.

Selected Validation Data



Various lysates were subjected to SDS PAGE followed by western blot with CL594-66119 (PDH E1 Alpha antibody) at dilution of 1:1000 incubated at room temperature for 1.5 hours.



1X10⁶ HepG2 cells were intracellularly stained with 0.4 ug Coralite® 594 Anti-Human PDH E1 Alpha (CL594-66119, Clone:2B3C10) (red), or 0.4 ug Mouse IgG2a Isotype Control (CL594-66360-2, Clone: K11A1B2A2) (blue). Cells were fixed with 4% PFA and permeabilized with Flow Cytometry Perm Buffer (PF00011-C).