

For Research Use Only



CoraLite®594-conjugated Alpha Galactosidase A Monoclonal antibody

Catalog Number: ~~CL594-66121~~

Featured Product

Basic Information

Catalog Number:
CL594-66121

Size:
100UL, Concentration: 2000 µg/ml by
Bradford method using BSA as the
standard;

Source:
Mouse

Isotype:
IgG2a

Immunogen Catalog Number:
AG7505

GenBank Accession Number:
BC002689

GeneID (NCBI):

2717

Full Name:
galactosidase, alpha

Calculated MW:
49 kDa

Observed MW:
49 kDa

Purification Method:
Protein A purification

CloneNo.:
2B2C5

Recommended Dilutions:
IF 1:50-1:500

Excitation/Emission maxima
wavelengths:
593 nm/614 nm

Applications

Tested Applications:
IF, ELISA

Species Specificity:
human

Positive Controls:

IF : HepG2 cells,

Background Information

GLA, also named as Melibiase and Alpha-galactosidase A, belongs to the glycosyl hydrolase 27 family. It hydrolyzes terminal, non-reducing alpha-D-galactose residues in alpha-D-galactosides, including galactose oligosaccharides, galactomannans and galactolipids. Fabry disease is an X-linked lysosomal storage disorder resulting from the deficient activity of GLA. Enzyme replacement therapy (ERT) with GLA is currently the most effective therapeutic strategy for patients with Fabry disease, a lysosomal storage disease.

Storage

Storage:

Store at -20°C. Avoid exposure to light. Stable for one year after shipment.

Storage Buffer:

PBS with 50% Glycerol, 0.05% Proclin300, 0.5% BSA, pH 7.3.

Aliquoting is unnecessary for -20°C storage

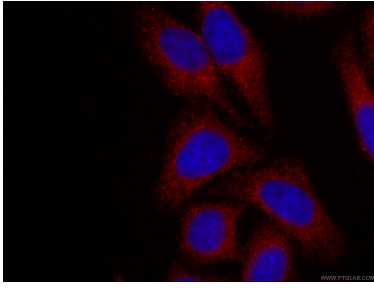
For technical support and original validation data for this product please contact:

T: 1 (888) 4PTGLAB (1-888-478-4522) (toll free
in USA), or 1(312) 455-8498 (outside USA)

E: proteintech@ptglab.com
W: ptglab.com

This product is exclusively available under Proteintech Group brand and is not available to purchase from any other manufacturer.

Selected Validation Data



Immunofluorescent analysis of (-20°C Ethanol) fixed HepG2 cells using CL594-66121 (Alpha galactosidase A antibody) at dilution of 1:100.