

For Research Use Only

CoraLite®594-conjugated RPL3 Monoclonal antibody



Catalog Number:CL594-66130

Basic Information

Catalog Number: CL594-66130	GenBank Accession Number: BC012786	Purification Method: Protein G purification
Size: 100ul , Concentration: 1000 µg/ml by Nanodrop;	GeneID (NCBI): 6122	CloneNo.: 2G1B8
Source: Mouse	Full Name: ribosomal protein L3	Recommended Dilutions: WB 1:500-1:1000 IF 1:50-1:500
Isotype: IgG1	Calculated MW: 46/27 kDa	Excitation/Emission maxima wavelengths: 593 nm / 614 nm
Immunogen Catalog Number: AG20400	Observed MW: 46 kDa	

Applications

Tested Applications: IF, WB	Positive Controls:
Species Specificity: human, mouse, rat	WB : HEK-293 cells, HeLa cells, Jurkat cells IF : HepG2 cells,

Background Information

Ribosomes, the complexes that catalyze protein synthesis, consist of a small 40S subunit and a large 60S subunit. Together these subunits are composed of 4 RNA species and approximately 80 structurally distinct proteins. RPL3, also named as TARBP-B and MGC104284, belongs to the ribosomal protein L3P family. This protein is a component of the 60S subunit. It can bind to the HIV-1 TAR mRNA, and it has been suggested that the protein contributes to tat-mediated transactivation. As is typical for genes encoding ribosomal proteins, there are multiple processed pseudogenes of this gene dispersed through the genome.

Storage

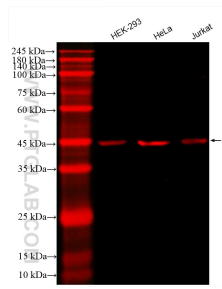
Storage:
Store at -20°C. Avoid exposure to light. Stable for one year after shipment.
Storage Buffer:
PBS with 50% Glycerol, 0.05% Proclin300, 0.5% BSA, pH 7.3.
Aliquoting is unnecessary for -20°C storage

***** 20ul sizes contain 0.1% BSA**

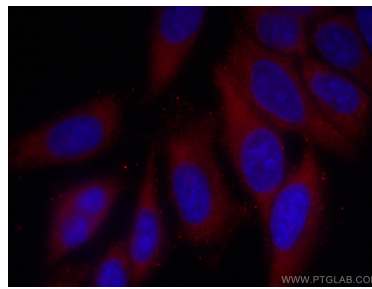
For technical support and original validation data for this product please contact:
T: 1 (888) 4PTGLAB (1-888-478-4522) (toll free in USA), or 1(312) 455-8498 (outside USA)
E: proteintech@ptglab.com
W: ptglab.com

This product is exclusively available under Proteintech Group brand and is not available to purchase from any other manufacturer.

Selected Validation Data



Various lysates were subjected to SDS PAGE followed by western blot with CL594-66130 (RPL3 antibody) at dilution of 1:500 incubated at room temperature for 1.5 hours.



Immunofluorescent analysis of (-20°C Methanol) fixed HepG2 cells using CoraLite® 594 RPL3 antibody (CL594-66130, Clone: 2G1B8) at dilution of 1:200.