

For Research Use Only



CoraLite®594-conjugated GOSR2/Membrin Monoclonal antibody

Catalog Number: **CL594-66134**

Featured Product

Basic Information

Catalog Number: CL594-66134	GenBank Accession Number: BC009710	Purification Method: Protein A purification
Size: 100ul , Concentration: 1000 µg/ml by Nanodrop;	GeneID (NCBI): 9570	CloneNo.: 7E7C7
Source: Mouse	Full Name: golgi SNAP receptor complex member1	Recommended Dilutions: 1:50-1:500
Isotype: IgG2a	Calculated MW: 212 aa, 25 kDa	Excitation/Emission maxima wavelengths: 593 nm / 614 nm
Immunogen Catalog Number: AG21393	Observed MW: 25 kDa	

Applications

Tested Applications: IF	Positive Controls: IF : human liver cancer tissue,
Species Specificity: human, rat	

Background Information

Golgi SNAP receptor complex member 2 (GOSR2), also known as GS27 or Membrin, is a member of the soluble NSF attachment protein receptor (SNARE) family of vesicle docking proteins. GOSR2 is localized in Golgi apparatus. It is involved in transport of proteins from the cis/medial-Golgi to the trans-Golgi network.

Storage

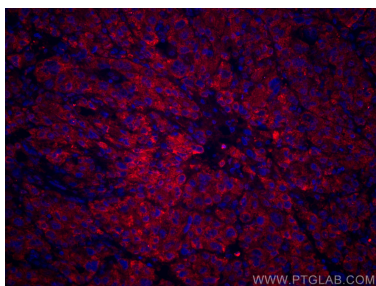
Storage:
Store at -20°C. Avoid exposure to light.
Storage Buffer:
PBS with 50% Glycerol, 0.05% Proclin300, 0.5% BSA, pH 7.3.
Aliquoting is unnecessary for -20°C storage

*** 20ul sizes contain 0.1% BSA

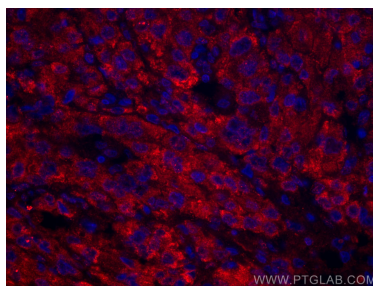
For technical support and original validation data for this product please contact:
T: 1 (888) 4PTGLAB (1-888-478-4522) (toll free in USA), or 1(312) 455-8498 (outside USA)
E: proteintech@ptglab.com
W: ptglab.com

This product is exclusively available under Proteintech Group brand and is not available to purchase from any other manufacturer.

Selected Validation Data



Immunofluorescent analysis of (4% PFA) fixed human liver cancer tissue using CoraLite®594 GOSR2/Membrin antibody (CL594-66134, Clone: 7E7C7) at dilution of 1:100.



Immunofluorescent analysis of (4% PFA) fixed human liver cancer tissue using CoraLite®594 GOSR2/Membrin antibody (CL594-66134, Clone: 7E7C7) at dilution of 1:100.