

For Research Use Only

CoraLite®594-conjugated BBS5 Monoclonal antibody



Catalog Number:CL594-66136

Basic Information

Catalog Number: CL594-66136	GenBank Accession Number: BC044593	Purification Method: Protein G purification
Size: 100ul , Concentration: 1000 µg/ml by Nanodrop;	GeneID (NCBI): 129880	CloneNo.: 4G8E12
Source: Mouse	Full Name: Bardet-Biedl syndrome 5	Recommended Dilutions: IF 1:50-1:500
Isotype: IgG1	Calculated MW: 39 kDa	Excitation/Emission maxima wavelengths: 593 nm / 614 nm
Immunogen Catalog Number: AG6844		

Applications

Tested Applications: IF	Positive Controls: IF : human kidney tissue,
Species Specificity: human, mouse	

Background Information

BBS5 encodes a protein that has been directly linked to Bardet-Biedl syndrome. Bardet-Biedl syndrome (BBS) is an autosomal recessive condition characterised by rod-cone dystrophy, postaxial polydactyly, central obesity, mental retardation, hypogonadism, and renal dysfunction. Other associated clinical findings in BBS patients include diabetes, hypertension and congenital heart defects. BBS expression varies both within and between families and diagnosis is often difficult. Experimentation in non-human eukaryotes suggests that BBS5 is expressed in ciliated cells and that it is required for the formation of cilia. Alternate transcriptional splice variants have been observed but have not been fully characterized.

Storage

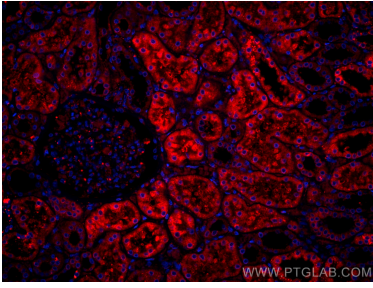
Storage:
Store at -20°C. Avoid exposure to light.
Storage Buffer:
PBS with 50% Glycerol, 0.05% Proclin300, 0.5% BSA, pH 7.3.
Aliquoting is unnecessary for -20°C storage

*** 20ul sizes contain 0.1% BSA

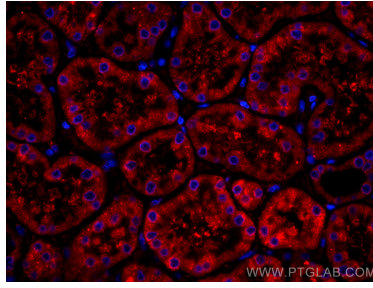
For technical support and original validation data for this product please contact:
T: 1 (888) 4PTGLAB (1-888-478-4522) (toll free in USA), or 1(312) 455-8498 (outside USA)
E: proteintech@ptglab.com
W: ptglab.com

This product is exclusively available under Proteintech Group brand and is not available to purchase from any other manufacturer.

Selected Validation Data



Immunofluorescent analysis of (4% PFA) fixed human kidney tissue using CoraLite®594 BBS5 antibody (CL594-66136, Clone: 4G8E12) at dilution of 1:100.



Immunofluorescent analysis of (4% PFA) fixed human kidney tissue using CoraLite®594 BBS5 antibody (CL594-66136, Clone: 4G8E12) at dilution of 1:100.