

CoraLite®594-conjugated Complement factor B Monoclonal antibody

Catalog Number: **CL594-66154**

Basic Information

Catalog Number: CL594-66154	GenBank Accession Number: BC007990	Purification Method: Thiophilic affinity chromatograph
Size: 100ul , Concentration: 1000 µg/ml by Nanodrop;	GeneID (NCBI): 629	CloneNo.: 8D2B6
Source: Mouse	Full Name: complement factor B	Recommended Dilutions: IF 1:50-1:500
Isotype: IgM	Calculated MW: 86 kDa	Excitation/Emission maxima wavelengths: 594 nm / 615 nm
Immunogen Catalog Number: AG19107	Observed MW: 93 kDa	

Applications

Tested Applications: IF	Positive Controls: IF : human liver tissue,
Species Specificity: human	

Background Information

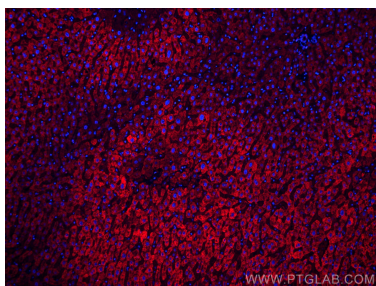
Complement factor B (CFB) is a component of the alternative pathway of complement activation. Complement factor B is cleaved into Ba and Bb by factor D in the presence of C3b. The active subunit Bb is a serine protease which associates with C3b to form the alternative pathway C3 convertase. Bb is involved in the proliferation of preactivated B lymphocytes, while Ba inhibits their proliferation.

Storage

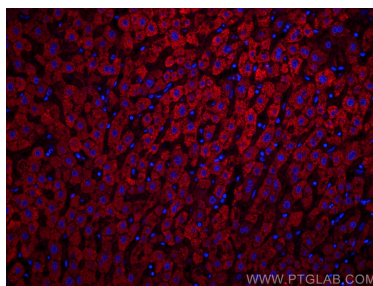
Storage:
Store at -20°C. Avoid exposure to light. Stable for one year after shipment.
Storage Buffer:
PBS with 50% Glycerol, 0.05% Proclin300, 0.5% BSA, pH 7.3.
Aliquoting is unnecessary for -20°C storage

***** 20ul sizes contain 0.1% BSA**

Selected Validation Data



Immunofluorescent analysis of (4% PFA) fixed human liver tissue using Coralite®594 Complement factor B antibody (CL594-66154, Clone: 8D2B6) at dilution of 1:200.



Immunofluorescent analysis of (4% PFA) fixed human liver tissue using Coralite®594 Complement factor B antibody (CL594-66154, Clone: 8D2B6) at dilution of 1:200.