

For Research Use Only

CoraLite®594-conjugated C3/C3b/C3c Monoclonal antibody

Catalog Number:CL594-66157



Basic Information

Catalog Number: CL594-66157	GenBank Accession Number: BC150179	Purification Method: Protein G purification
Size: 100ul , Concentration: 1000 ug/ml by Nanodrop;	GeneID (NCBI): 718	CloneNo.: 2A6B3
Source: Mouse	UNIPROT ID: P01024	Recommended Dilutions: IF/ICC 1:50-1:500
Isotype: IgG1	Full Name: complement component 3	Excitation/Emission maxima wavelengths: 588 nm / 604 nm
Immunogen Catalog Number: AG15955	Calculated MW: 1663 aa, 187 kDa	
	Observed MW: 115 kDa	

Applications

Tested Applications: IF/ICC	Positive Controls: IF/ICC : HepG2 cells,
Species Specificity: human	

Background Information

The complement system is an important effector which bridges the innate and adaptive immune systems (PMID: 20010915). The third component of complement, C3, plays a central role in the activation of the complement system. Its processing by C3 convertase is the central reaction in both classical and alternative complement pathways (PMID: 11414361). Human C3, composed of α and β chains (115 and 75 kDa, respectively), is cleaved into C3a and C3b by C3 convertase. C3b is further cleaved into iC3b, C3c, C3dg and C3f. This antibody raised against 1314-1663 aa of human C3 protein recognize C3 alpha chain, C3b alpha' chain, and C3c alpha' chain fragment 2.

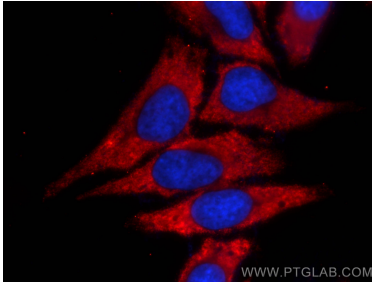
Storage

Storage:
Store at -20°C. Avoid exposure to light. Stable for one year after shipment.
Storage Buffer:
PBS with 50% Glycerol, 0.05% Proclin300, 0.5% BSA, pH 7.3.
Aliquoting is unnecessary for -20°C storage

For technical support and original validation data for this product please contact:
T: 1 (888) 4PTGLAB (1-888-478-4522) (toll free in USA), or 1(312) 455-8498 (outside USA)
E: proteintech@ptglab.com
W: ptglab.com

This product is exclusively available under Proteintech Group brand and is not available to purchase from any other manufacturer.

Selected Validation Data



Immunofluorescent analysis of (-20°C Methanol) fixed HepG2 cells using CoraLite®594 C3/C3b/C3c antibody (CL594-66157, Clone: 2A6B3) at dilution of 1:200.