

For Research Use Only

CoraLite®594-conjugated Zinc Alpha 2 Glycoprotein Monoclonal antibody



Catalog Number:CL594-66178

Basic Information

Catalog Number: CL594-66178	GenBank Accession Number: BC033830	Purification Method: Protein G purification
Size: 100ul , Concentration: 1000 µg/ml by Nanodrop;	GeneID (NCBI): 563	CloneNo.: 4B8A4
Source: Mouse	Full Name: alpha-2-glycoprotein 1, zinc-binding	Recommended Dilutions: IF 1:50-1:500
Isotype: IgG1	Calculated MW: 298 aa, 34 kDa	Excitation/Emission maxima wavelengths: 588 nm / 604 nm
Immunogen Catalog Number: AG5661	Observed MW: 41 kDa	

Applications

Tested Applications: IF	Positive Controls: IF : PC-3 cells,
Species Specificity: human	

Background Information

Zinc-alpha-2-glycoprotein (AZGP1) is a 41-kDa soluble protein normally found in body fluids, functions as a lipid mobilizing factor (PMID: 19188554). It is known to be expressed in the secretory epithelia of the liver, lung, breast, GI tract and sweat glands, sharing significant structural similarity with the class I major histocompatibility complex (MHC) antigens (PMID: 3422450). AZGP1 is involved in carcinogenesis and differentiation. Altered expression of AZGP1 has been reported in breast cancer, prostate cancer and lung adenocarcinoma, hepatocellular carcinoma, pancreatic carcinoma and oral tumors (PMID: 22625427).

Storage

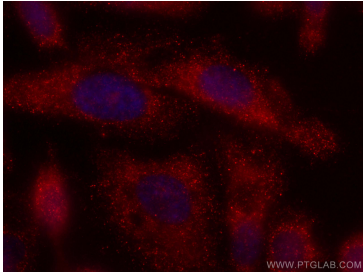
Storage:
Store at -20°C. Avoid exposure to light. Stable for one year after shipment.
Storage Buffer:
PBS with 50% Glycerol, 0.05% Proclin300, 0.5% BSA, pH 7.3.
Aliquoting is unnecessary for -20°C storage

*** 20ul sizes contain 0.1% BSA

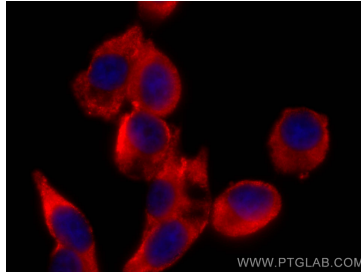
For technical support and original validation data for this product please contact:
T: 1 (888) 4PTGLAB (1-888-478-4522) (toll free in USA), or 1(312) 455-8498 (outside USA) E: proteintech@ptglab.com W: ptglab.com

This product is exclusively available under Proteintech Group brand and is not available to purchase from any other manufacturer.

Selected Validation Data



Immunofluorescent analysis of (-20°C Methanol) fixed PC-3 cells using CoraLite®594 Zinc Alpha 2 Glycoprotein antibody (CL594-66178, Clone: 4B8A4) at dilution of 1:200.



Immunofluorescent analysis of (-20°C Methanol) fixed PC-3 cells using CoraLite®594 Zinc Alpha 2 Glycoprotein antibody (CL594-66178, Clone: 4B8A4) at dilution of 1:200.