

For Research Use Only

# CoraLite®594-conjugated SERPINE2 Monoclonal antibody

Catalog Number:CL594-66203



## Basic Information

Catalog Number:

CL594-66203

Size:

100ul , Concentration: 2000 ug/ml by 5270

Nanodrop;

Source:

Mouse

Isotype:

IgG1

Immunogen Catalog Number:

AG1830

GenBank Accession Number:

BC015663

GeneID (NCBI):

5270

UNIPROT ID:

P07093

Full Name:

serpin peptidase inhibitor, clade E (nexin, plasminogen activator inhibitor type 1), member 2

Calculated MW:

44 kDa

Observed MW:

44 kDa

Purification Method:

Protein G purification

CloneNo.:

1E11F12

Recommended Dilutions:

IF/ICC 1:50-1:500

Excitation/Emission maxima

wavelengths:

588 nm / 604 nm

## Applications

Tested Applications:

IF/ICC

Species Specificity:

human

Positive Controls:

IF/ICC : HEK-293 cells,

## Background Information

SERPINE2 also called protease nexin-1 or glial-derived neurite promoting factor, is a member of the serine protease inhibitor (SERPIN) superfamily. It would be a potent inhibitor of the urokinase-plasminogen activator (uPA), tissue-type PA (tPA), thrombin, trypsin, factor X<sub>ia</sub>, and prostasin. SERPINE2 is widely expressed in various tissues, including endothelial cells, fibroblasts, smooth muscle cells, tumor cells, glial cells, neurons, and placental cells.

## Storage

Storage:

Store at -20°C. Avoid exposure to light. Stable for one year after shipment.

Storage Buffer:

PBS with 50% Glycerol, 0.05% Proclin300, 0.5% BSA, pH 7.3.

Aliquoting is unnecessary for -20°C storage

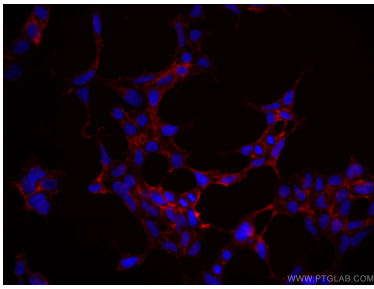
For technical support and original validation data for this product please contact:

T: 1 (888) 4PTGLAB (1-888-478-4522) (toll free in USA), or 1(312) 455-8498 (outside USA)

E: [proteintech@ptglab.com](mailto:proteintech@ptglab.com)  
W: [ptglab.com](http://ptglab.com)

This product is exclusively available under Proteintech Group brand and is not available to purchase from any other manufacturer.

## Selected Validation Data



Immunofluorescent analysis of (-20°C Ethanol) fixed HEK-293 cells using CL594-66203 (SERPINE2 antibody) at dilution of 1:100.