

For Research Use Only

# CoraLite®594-conjugated Apolipoprotein AI Monoclonal antibody

Catalog Number:CL594-66206



## Basic Information

Catalog Number:

CL594-66206

Size:

100ul , Concentration: 1000 ug/ml by  
Nanodrop;

Source:

Mouse

Isotype:

IgG2b

Immunogen Catalog Number:

AG21920

GenBank Accession Number:

BC005380

GeneID (NCBI):

335

UNIPROT ID:

P02647

Full Name:

apolipoprotein A-I

Calculated MW:

31 kDa

Observed MW:

26-28 kDa

Purification Method:

Protein A purification

CloneNo.:

1C9G5

Recommended Dilutions:

IF/ICC: 1:50-1:500

FC (Intra): 0.40 ug per 10<sup>6</sup> cells in a  
100 µl suspension

Excitation/Emission maxima  
wavelengths:

588 nm / 604 nm

## Applications

Tested Applications:

IF/ICC, FC (Intra)

Species Specificity:

human, mouse

Positive Controls:

IF/ICC : HepG2 cells, L02 cells

FC (Intra) : HepG2 cells,

## Background Information

ApoA1 is a major protein component of high density lipoproteins (HDL) which is associated with reversed cholesterol transport, lipid/cholesterol binding, lecithin/cholesterol acyltransferase (LCAT) activation and specific receptors binding. It is synthesized in the liver and small intestine. Defects of ApoA1 cause low HDL level and systemic non-neuropathic amyloidosis. Serum concentration of ApoA1 is inversely related to the risk of developing atherosclerosis. This antibody was generated against the C-terminal region of human ApoA1.

## Storage

Storage:

Store at -20°C. Avoid exposure to light. Stable for one year after shipment.

Storage Buffer:

PBS with 50% glycerol, 0.05% Proclin300, 0.5% BSA, pH7.3

Aliquoting is unnecessary for -20°C storage

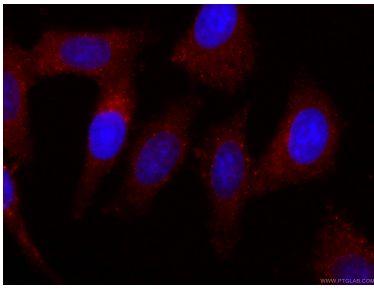
For technical support and original validation data for this product please contact:

T: 1 (888) 4PTGLAB (1-888-478-4522) (toll free  
in USA), or 1(312) 455-8498 (outside USA)

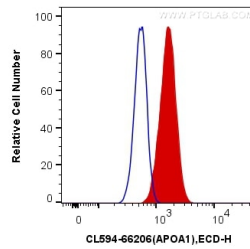
E: [proteintech@ptglab.com](mailto:proteintech@ptglab.com)  
W: [ptglab.com](http://ptglab.com)

This product is exclusively available under Proteintech Group brand and is not available to purchase from any other manufacturer.

## Selected Validation Data



Immunofluorescent analysis of (-20°C Ethanol) fixed HepG2 cells using CL594-66206 (Apolipoprotein AI antibody) at dilution of 1:100.



1X10<sup>6</sup> HepG2 cells were intracellularly stained with 0.4 ug CoraLite®594 Anti-Human Apolipoprotein AI (CL594-66206, Clone:1C9G5) (red), or 0.4 ug Mouse IgG2b Isotype Control (CL594-66360-3, Clone: K11B8C4B5) (blue). Cells were fixed with 4% PFA and permeabilized with Flow Cytometry Perm Buffer (PF00011-C).