

For Research Use Only

# CoraLite®594-conjugated Beta-2-Microglobulin Monoclonal antibody



Catalog Number:CL594-66207

## Basic Information

<b>Catalog Number:</b> CL594-66207	<b>GenBank Accession Number:</b> BC032589	<b>Purification Method:</b> Protein A purification
<b>Size:</b> 100ul , Concentration: 1000 µg/ml by Nanodrop;	<b>GeneID (NCBI):</b> 567	<b>CloneNo.:</b> 1C3B7
<b>Source:</b> Mouse	<b>Full Name:</b> beta-2-microglobulin	<b>Recommended Dilutions:</b> IF 1:50-1:500
<b>Isotype:</b> IgG2b	<b>Calculated MW:</b> 14 kDa	<b>Excitation/Emission maximum wavelengths:</b> 593 nm / 614 nm
	<b>Observed MW:</b> 13 kDa	

## Applications

<b>Tested Applications:</b> IF	<b>Positive Controls:</b> IF : human prostate cancer tissue,
<b>Species Specificity:</b> human	

## Background Information

Beta-2-microglobulin (B2M) is a component of MHC class I molecules, which are present on the surface of nearly all nucleated cells. It can be found in body fluids under physiologic conditions as a result of shedding from cell surfaces or intracellular release. B2M has various biological functions, including antigen presentation. Investigations reveal that increased synthesis and release of B2M are present in several malignant diseases.

## Storage

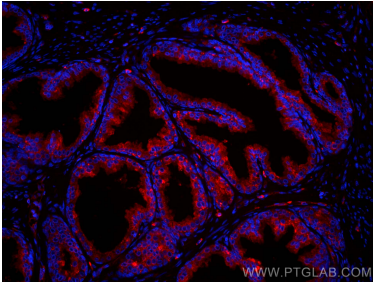
**Storage:**  
Store at -20°C. Avoid exposure to light. Stable for one year after shipment.  
**Storage Buffer:**  
PBS with 50% Glycerol, 0.05% Proclin300, 0.5% BSA, pH 7.3.  
Aliquoting is unnecessary for -20°C storage

\*\*\* 20ul sizes contain 0.1% BSA

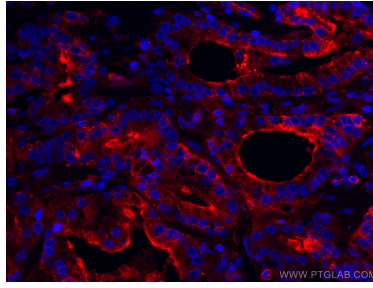
For technical support and original validation data for this product please contact:  
T: 1 (888) 4PTGLAB (1-888-478-4522) (toll free in USA), or 1(312) 455-8498 (outside USA) E: proteintech@ptglab.com W: ptglab.com

This product is exclusively available under Proteintech Group brand and is not available to purchase from any other manufacturer.

## Selected Validation Data



Immunofluorescent analysis of (4% PFA) fixed human prostate cancer tissue using CoraLite®594 Beta-2-Microglobulin antibody (CL594-66207, Clone: 1C3B7 ) at dilution of 1:200.



Immunofluorescent analysis of (4% PFA) fixed human prostate cancer tissue using CoraLite®594 Beta-2-Microglobulin antibody (CL594-66207, Clone: 1C3B7 ) at dilution of 1:100.