

For Research Use Only

# CoraLite®594-conjugated Alpha E-Catenin Monoclonal antibody

Catalog Number: CL594-66221



## Basic Information

Catalog Number:

CL594-66221

Size:

100ul , Concentration: 1000 ug/ml by Nanodrop;

Source:

Mouse

Isotype:

IgG1

Immunogen Catalog Number:

AG23603

GenBank Accession Number:

BC031262

GeneID (NCBI):

1495

UNIPROT ID:

P35221

Full Name:

catenin (cadherin-associated protein), alpha 1, 102kDa

Calculated MW:

906 aa, 100 kDa

Observed MW:

95-100 kDa

Purification Method:

Protein G purification

CloneNo.:

2B7B8

Excitation/Emission maxima wavelengths:

588 nm / 604 nm

## Applications

Tested Applications:

FC (Intra)

Species Specificity:

human, mouse

## Background Information

Alpha catenin is an essential component of adherens junctions that connects E-cadherin- $\beta$ -catenin complexes with the actin cytoskeleton. It also recruits a range of other important proteins to developing intercellular junctions. Three alpha catenins exist in human: alpha-E-catenin, alpha-N-catenin, and alpha-T-catenin, which share substantial amino-acid sequence similarity but have distinct tissue distribution. alpha-E-catenin is ubiquitously expressed, alpha-N-catenin is restricted to neuronal tissue, and alpha-T-catenin is primarily expressed in heart tissue. Reduced levels of alpha-E-catenin protein seem to be characteristic of many different human cancers, including malignant tumours of the breast, colon, stomach, oesophagus, bladder and liver. In addition, the loss of alpha-E-catenin often correlates with the degree of tumour differentiation and metastasis.

## Storage

Storage:

Store at -20°C. Avoid exposure to light. Stable for one year after shipment.

Storage Buffer:

PBS with 50% Glycerol, 0.05% Proclin300, 0.5% BSA, pH 7.3.

Aliquoting is unnecessary for -20°C storage

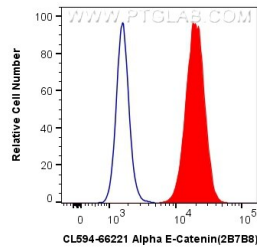
For technical support and original validation data for this product please contact:

T: 1 (888) 4PTGLAB (1-888-478-4522) (toll free in USA), or 1(312) 455-8498 (outside USA)

E: [proteintech@ptglab.com](mailto:proteintech@ptglab.com)  
W: [ptglab.com](http://ptglab.com)

This product is exclusively available under Proteintech Group brand and is not available to purchase from any other manufacturer.

## Selected Validation Data



1X10<sup>6</sup> MCF-7 cells were intracellularly stained with 0.8 ug CoraLite® 594 Anti-Human Alpha E-Catenin (CL594-66221, Clone: 2B7B8) (red), or 0.8 ug CoraLite® 594 Mouse IgG1 Isotype Control (MOPC-21) (CL594-65124, Clone: MOPC-21) (blue). Cells were fixed with 4% PFA and permeabilized with Flow Cytometry Perm Buffer (PF00011-C).