

For Research Use Only

CoraLite®594-conjugated Mammaglobin A Monoclonal antibody



Catalog Number: **CL594-66237**

Basic Information

Catalog Number: CL594-66237	GenBank Accession Number: BC128252	Purification Method: Protein G purification
Size: 100ul , Concentration: 1000 µg/ml by Nanodrop;	GeneID (NCBI): 4250	CloneNo.: 2E5D4
Source: Mouse	Full Name: secretoglobin, family 2A, member 2	Recommended Dilutions: IF 1:50-1:500
Isotype: IgG1	Calculated MW: 93 aa, 10 kDa	Excitation/Emission maxima wavelengths: 593 nm/614 nm
Immunogen Catalog Number: AG22485		

Applications

Tested Applications: IF	Positive Controls: IF : human breast cancer tissue,
Species Specificity: human	

Background Information

Mammaglobin A, also known as SCGB2A2, is a member of the secretoglobin superfamily. Mammaglobin A is a breast cancer-associated antigen almost exclusively over-expressed in primary and metastatic human breast cancers, making it a specific molecular marker and a potential therapeutic target for breast cancer. This monoclonal antibody is raised against full-length of 93-amino acid human mammaglobin A.

Storage

Storage:
Store at -20°C. Avoid exposure to light.
Storage Buffer:
PBS with 50% Glycerol, 0.05% Proclin300, 0.5% BSA, pH 7.3.
Aliquoting is unnecessary for -20°C storage

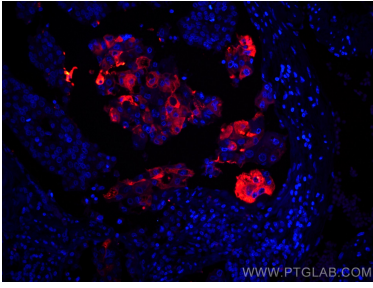
For technical support and original validation data for this product please contact:

T: 1 (888) 4PTGLAB (1-888-478-4522) (toll free
in USA), or 1(312) 455-8498 (outside USA)

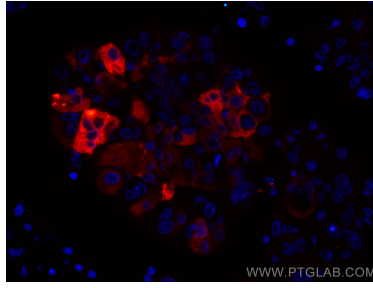
E: proteintech@ptglab.com
W: ptglab.com

This product is exclusively available under Proteintech Group brand and is not available to purchase from any other manufacturer.

Selected Validation Data



Immunofluorescent analysis of (4% PFA) fixed human breast cancer tissue using CoraLite®594 Mammaglobin A antibody (CL594-66237, Clone: 2E5D4) at dilution of 1:200.



Immunofluorescent analysis of (4% PFA) fixed human breast cancer tissue using CoraLite®594 Mammaglobin A antibody (CL594-66237, Clone: 2E5D4) at dilution of 1:200.