

For Research Use Only

# CoraLite®594-conjugated 14-3-3 Sigma Monoclonal antibody

Catalog Number:CL594-66251



## Basic Information

Catalog Number:

CL594-66251

Size:

100ul , Concentration: 1000 ug/ml by  
Nanodrop;

Source:

Mouse

Isotype:

IgG1

Immunogen Catalog Number:

AG12644

GenBank Accession Number:

BC002995

GeneID (NCBI):

2810

UNIPROT ID:

P31947

Full Name:

stratifin

Calculated MW:

28 kDa

Observed MW:

28-30 kDa

Purification Method:

Protein G purification

CloneNo.:

3F10D9

Recommended Dilutions:

IF/ICC 1:50-1:500

Excitation/Emission maxima  
wavelengths:

588 nm / 604 nm

## Applications

Tested Applications:

IF/ICC, FC (Intra)

Species Specificity:

human

Positive Controls:

IF/ICC : MCF-7 cells,

## Background Information

14-3-3 Sigma is a member 14-3-3 family of highly conserved proteins participating in diverse cellular processes including cell cycle progression. It is exclusively present in various epithelial cells, and alternatively named as human epithelial marker (HEM), or stratifin. Alteration of its expression has been linked to cancer.

## Storage

Storage:

Store at -20°C. Avoid exposure to light. Stable for one year after shipment.

Storage Buffer:

PBS with 50% Glycerol, 0.05% Proclin300, 0.5% BSA, pH 7.3.

Aliquoting is unnecessary for -20°C storage

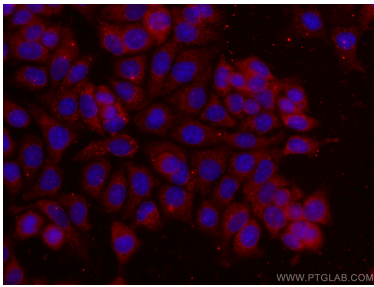
For technical support and original validation data for this product please contact:

T: 1 (888) 4PTGLAB (1-888-478-4522) (toll free  
in USA), or 1(312) 455-8498 (outside USA)

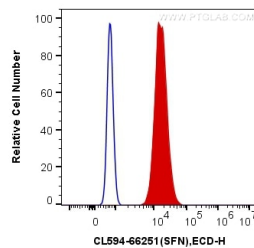
E: [proteintech@ptglab.com](mailto:proteintech@ptglab.com)  
W: [ptglab.com](http://ptglab.com)

This product is exclusively available under Proteintech Group brand and is not available to purchase from any other manufacturer.

## Selected Validation Data



Immunofluorescent analysis of (-20°C Ethanol) fixed MCF-7 cells using Coralite®594 14-3-3 Sigma antibody (CL594-66251, Clone: 3F10D9 ) at dilution of 1:100.



1X10<sup>6</sup> A431 cells were intracellularly stained with 0.2 ug Coralite®594 Anti-Human 14-3-3 Sigma (CL594-66251, Clone:3F10D9) (red), or 0.2 ug Mouse IgG1 Isotype Control (CL594-66360, Clone: T1F8D3F10) (blue). Cells were fixed with 4% PFA and permeabilized with Flow Cytometry Perm Buffer (PF00011-C).