

For Research Use Only

CoraLite®594-conjugated CD11a/Integrin Alpha L Monoclonal antibody



Catalog Number:CL594-66256

Basic Information

Catalog Number: CL594-66256	GenBank Accession Number: BC008777	Purification Method: Protein G purification
Size: 100ul , Concentration: 1000 µg/ml by Nanodrop;	GeneID (NCBI): 3683	CloneNo.: 1E3H12
Source: Mouse	Full Name: integrin, alpha L (antigen CD11A (p180), lymphocyte function- associated antigen 1; alpha polypeptide)	Recommended Dilutions: IF 1:50-1:500
Isotype: IgG1	Calculated MW: 129 kDa	Excitation/Emission maxima wavelengths: 593 nm / 614 nm
Immunogen Catalog Number: AG7813		

Applications

Tested Applications: IF	Positive Controls: IF : human tonsillitis tissue,
Species Specificity: human	

Background Information

CD11a, also known as integrin αL or LFA-1α, is a 170-180 kDa transmembrane glycoprotein that forms a heterodimer with CD18 (PMID: 7027264; 1672643). CD11a/CD18 (LFA-1) is expressed by all leukocytes and mediates cell adhesion through interactions with its ligands, intercellular adhesion molecule 1 (ICAM-1), ICAM-2, and ICAM-3 (PMID: 7479767). CD11a/CD18 also functions in lymphocyte costimulatory signaling (PMID: 1972160).

Storage

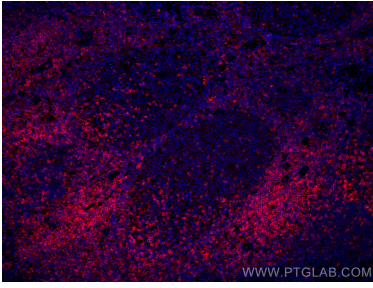
Storage:
Store at -20°C. Avoid exposure to light.
Storage Buffer:
PBS with 50% Glycerol, 0.05% Proclin300, 0.5% BSA, pH 7.3.
Aliquoting is unnecessary for -20°C storage

*** 20ul sizes contain 0.1% BSA

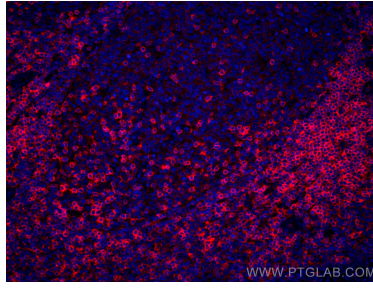
For technical support and original validation data for this product please contact:
T: 1 (888) 4PTGLAB (1-888-478-4522) (toll free in USA), or 1(312) 455-8498 (outside USA) E: proteintech@ptglab.com W: ptglab.com

This product is exclusively available under Proteintech Group brand and is not available to purchase from any other manufacturer.

Selected Validation Data



Immunofluorescent analysis of (4% PFA) fixed human tonsillitis tissue using CoraLite®594 CD11a/Integrin Alpha L antibody (CL594-66256, Clone: 1E3H12) at dilution of 1:200.



Immunofluorescent analysis of (4% PFA) fixed human tonsillitis tissue using CoraLite®594 CD11a/Integrin Alpha L antibody (CL594-66256, Clone: 1E3H12) at dilution of 1:200.