

For Research Use Only

# CoraLite®594-conjugated Serpin E1/PAI-1 Monoclonal antibody

Catalog Number:CL594-66261



## Basic Information

### Catalog Number:

CL594-66261

### Size:

100ul , Concentration: 1000 ug/ml by Nanodrop;

### Source:

Mouse

### Isotype:

IgG1

### Immunogen Catalog Number:

AG22411

### GenBank Accession Number:

BC010860

### GeneID (NCBI):

5054

### UNIPROT ID:

P05121

### Full Name:

serpin peptidase inhibitor, clade E (nexin, plasminogen activator inhibitor type 1), member 1

### Calculated MW:

402 aa, 45 kDa

### Observed MW:

50 kDa

### Purification Method:

Protein G purification

### CloneNo.:

1H4A5

### Recommended Dilutions:

IF/ICC 1:50-1:500

### Excitation/Emission maxima wavelengths:

588 nm / 604 nm

## Applications

### Tested Applications:

IF/ICC

### Species Specificity:

human, pig

### Positive Controls:

IF/ICC : HepG2 cells,

## Background Information

SERPINE1, also named as Plasminogen activator inhibitor type 1 (PAI-1), is a member of the serine protease inhibitor (SERPIN) superfamily. PAI-1 is the principal inhibitor of tissue plasminogen activator (tPA) and uPA, and hence is an inhibitor of fibrinolysis. Defects in this gene are the cause of plasminogen activator inhibitor-1 deficiency (PAI-1 deficiency), and high concentrations of the gene product are associated with thrombophilia.

## Storage

### Storage:

Store at -20°C. Avoid exposure to light. Stable for one year after shipment.

### Storage Buffer:

PBS with 50% Glycerol, 0.05% Proclin300, 0.5% BSA, pH 7.3.

Aliquoting is unnecessary for -20°C storage

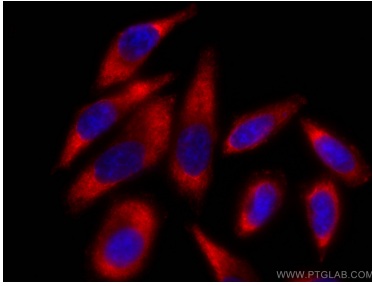
For technical support and original validation data for this product please contact:

T: 1 (888) 4PTGLAB (1-888-478-4522) (toll free in USA), or 1(312) 455-8498 (outside USA)

E: [proteintech@ptglab.com](mailto:proteintech@ptglab.com)  
W: [ptglab.com](http://ptglab.com)

This product is exclusively available under Proteintech Group brand and is not available to purchase from any other manufacturer.

## Selected Validation Data



Immunofluorescent analysis of (-20°C Ethanol) fixed HepG2 cells using CoraLite®594-conjugated PAI-1 antibody (CL594-66261, Clone: 1H4A5 ) at dilution of 1:100.