

For Research Use Only

CoraLite®594-conjugated L2HGDH Monoclonal antibody

Catalog Number:CL594-66269



Basic Information

Catalog Number: CL594-66269	GenBank Accession Number: BC006117	Purification Method: Protein A purification
Size: 100ul , Concentration: 1000 ug/ml by Nanodrop;	GeneID (NCBI): 79944	CloneNo.: 3D11C2
Source: Mouse	UNIPROT ID: Q9H9P8	Recommended Dilutions: IF-P 1:50-1:500
Isotype: IgG2a	Full Name: L-2-hydroxyglutarate dehydrogenase	Excitation/Emission maxima wavelengths: 588 nm / 604 nm
Immunogen Catalog Number: AG8382	Calculated MW: 463aa,50 kDa; 441aa,49 kDa	
	Observed MW: 45 kDa	

Applications

Tested Applications: IF-P	Positive Controls: IF-P : human breast cancer tissue,
Species Specificity: human, pig	

Background Information

L2HGDH(L-2-hydroxyglutarate dehydrogenase, mitochondrial) is also named as duranin, C14orf160 and belongs to the L2HGDH family. The putative L2HGDH is predicted to be targeted to the mitochondria where its mitochondrial targeting sequence is presumably removed(PMID:16005139). Defects in L2HGDH are the cause of L-2-hydroxyglutaric aciduria (L2HGA). It has 2 isoforms produced by alternative splicing with the molecular weight of 50 kDa and 48 kDa. L2HGDH also can be detected as ~45kD due to the 51aa transit peptide cleaved.

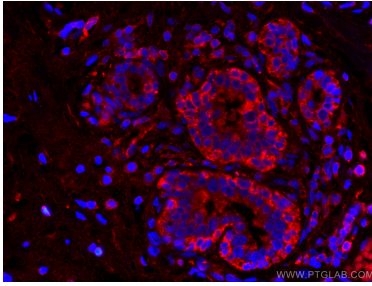
Storage

Storage:
Store at -20°C. Avoid exposure to light. Stable for one year after shipment.
Storage Buffer:
PBS with 50% Glycerol, 0.05% Proclin300, 0.5% BSA, pH 7.3.
Aliquoting is unnecessary for -20°C storage

For technical support and original validation data for this product please contact:
T: 1 (888) 4PTGLAB (1-888-478-4522) (toll free in USA), or 1(312) 455-8498 (outside USA)
E: proteintech@ptglab.com
W: ptglab.com

This product is exclusively available under Proteintech Group brand and is not available to purchase from any other manufacturer.

Selected Validation Data



Immunofluorescent analysis of (4% PFA) fixed human breast cancer tissue using CoraLite®594 L2HGDH antibody (CL594-66269, Clone: 3D11C2) at dilution of 1:200.