

For Research Use Only

CoraLite®594-conjugated CAPG Monoclonal antibody

Catalog Number: CL594-66277

Featured Product



Basic Information

Catalog Number:

CL594-66277

Size:

100ul , Concentration: 1000 ug/ml by
Nanodrop;

Source:

Mouse

Isotype:

IgG1

Immunogen Catalog Number:

AG24676

GenBank Accession Number:

BC000728

GeneID (NCBI):

822

UNIPROT ID:

P40121

Full Name:

capping protein (actin filament),
gelsolin-like

Calculated MW:

39 kDa

Observed MW:

39-40 kDa

Purification Method:

Protein G purification

CloneNo.:

3A5B2

Recommended Dilutions:

IF/ICC 1:50-1:500

Excitation/Emission maxima
wavelengths:

588 nm / 604 nm

Applications

Tested Applications:

IF/ICC

Species Specificity:

human

Positive Controls:

IF/ICC : HeLa cells,

Background Information

CapG (gelsolin-like actin-capping protein) is a member of the gelsolin superfamily proteins, which regulates actin filament length by capping or severing filaments. Studies have shown a role for CapG in regulating cell motility. The expression of CapG is upregulated under hypoxia and in turn increases the motility of cells. Recently it has been reported that the overexpression of CapG is associated with the progression of lung adenocarcinoma as well as lymphatic invasion status of cholangiocarcinoma, which may be used for prognosis of these tumors. (21908955,22155129)

Storage

Storage:

Store at -20°C. Avoid exposure to light. Stable for one year after shipment.

Storage Buffer:

PBS with 50% Glycerol, 0.05% Proclin300, 0.5% BSA, pH 7.3.

Aliquoting is unnecessary for -20°C storage

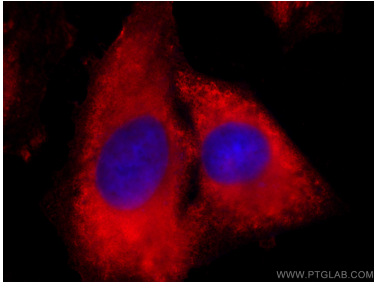
For technical support and original validation data for this product please contact:

T: 1 (888) 4PTGLAB (1-888-478-4522) (toll free
in USA), or 1(312) 455-8498 (outside USA)

E: proteintech@ptglab.com
W: ptglab.com

This product is exclusively available under Proteintech Group brand and is not available to purchase from any other manufacturer.

Selected Validation Data



Immunofluorescent analysis of (-20°C Ethanol) fixed HeLa cells using CoraLite®594 CAPG antibody (CL594-66277, Clone: 3A5B2) at dilution of 1:200.