

For Research Use Only

# CoraLite®594-conjugated CDK6 Monoclonal antibody

Catalog Number:CL594-66278

Featured Product



## Basic Information

Catalog Number:

CL594-66278

Size:

100ul , Concentration: 2000 µg/ml by Nanodrop;

Source:

Mouse

Isotype:

IgG1

Immunogen Catalog Number:

AG5600

GenBank Accession Number:

BC027989

GeneID (NCBI):

1021

UNIPROT ID:

Q00534

Full Name:

cyclin-dependent kinase 6

Calculated MW:

326 aa, 36 kDa

Observed MW:

36-40 kDa

Purification Method:

Protein A purification

CloneNo.:

4B9C11

Recommended Dilutions:

IF/ICC 1:50-1:500

Excitation/Emission maxima wavelengths:

588 nm / 604 nm

## Applications

Tested Applications:

IF/ICC, FC (Intra)

Species Specificity:

human, mouse, rat

Positive Controls:

IF/ICC : HeLa cells,

## Background Information

CDK6(Cyclin-dependent kinase 6) is involved in initiation and maintenance of cell cycle exit during cell differentiation and it prevents cell proliferation and regulates negatively cell differentiation, but is required for the proliferation of specific cell types.The molecular weight of CDK6 is 36-40 KDa (PMID: 23563707, 8114739).

## Storage

Storage:

Store at -20°C. Avoid exposure to light. Stable for one year after shipment.

Storage Buffer:

PBS with 50% Glycerol, 0.05% Proclin300, 0.5% BSA, pH 7.3.

Aliquoting is unnecessary for -20°C storage

For technical support and original validation data for this product please contact:

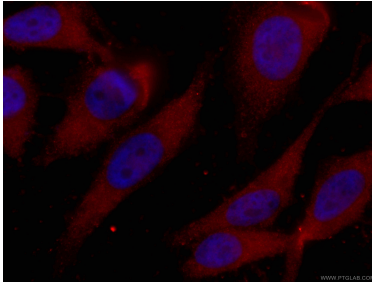
T: 1 (888) 4PTGLAB (1-888-478-4522) (toll free in USA), or 1(312) 455-8498 (outside USA)

E: [proteintech@ptglab.com](mailto:proteintech@ptglab.com)

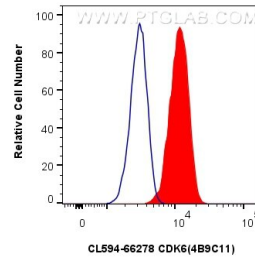
W: [ptglab.com](http://ptglab.com)

This product is exclusively available under Proteintech Group brand and is not available to purchase from any other manufacturer.

## Selected Validation Data



Immunofluorescent analysis of (-20°C Ethanol) fixed HeLa cells using CL594-66278 (CDK6 antibody) at dilution of 1:100.



1x10<sup>6</sup> HeLa cells were intracellularly stained with 0.4 ug CoraLite®594-conjugated CDK6 Monoclonal antibody (CL594-66278, Clone:4B9C11)(red), or 0.4 ug CoraLite®594 Mouse IgG1 Isotype Control (1F8D3) (CL594-66360-1, Clone: 1F8D3) (blue). Cells were fixed with 4% PFA and permeabilized with Flow Cytometry Perm Buffer (PF00011-C).