

For Research Use Only

CoraLite®594-conjugated MYL3 Monoclonal antibody

Catalog Number: CL594-66286



Basic Information

Catalog Number:

CL594-66286

Size:

100ul , Concentration: 1000 ug/ml by Nanodrop;

Source:

Mouse

Isotype:

IgG1

Immunogen Catalog Number:

AG24535

GenBank Accession Number:

BC009790

GeneID (NCBI):

4634

UNIPROT ID:

P08590

Full Name:

myosin, light chain 3, alkali; ventricular, skeletal, slow

Calculated MW:

22 kDa

Observed MW:

22-25 kDa

Purification Method:

Protein G purification

CloneNo.:

2E4B2

Recommended Dilutions:

IF-P 1:50-1:500

IF/ICC 1:50-1:500

Excitation/Emission maxima wavelengths:

588 nm / 604 nm

Applications

Tested Applications:

IF/ICC, IF-P

Species Specificity:

human, mouse, rat, pig

Positive Controls:

IF-P : mouse skeletal muscle tissue,

IF/ICC : C2C12 cells,

Background Information

MYL3, also named as MLC1v, is an essential light chain of myosin that is associated with muscle contraction. It is expressed in ventricular and slow skeletal muscle. MYL3 may serve as a target for caspase-3 in dying cardiomyocytes. Mutations of MYL3 gene cause hypertrophic cardiomyopathy. MYL3 has been identified as potential serum biomarker for drug induced myotoxicity. Great increase in MYL3 serum concentration has been observed in rats with cardiac and skeletal muscle injury. (PMID:21685905)

Storage

Storage:

Store at -20°C. Avoid exposure to light. Stable for one year after shipment.

Storage Buffer:

PBS with 50% Glycerol, 0.05% Proclin300, 0.5% BSA, pH 7.3.

Aliquoting is unnecessary for -20°C storage

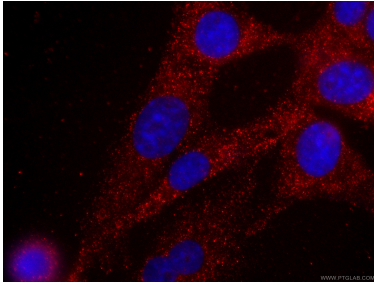
For technical support and original validation data for this product please contact:

T: 1 (888) 4PTGLAB (1-888-478-4522) (toll free in USA), or 1(312) 455-8498 (outside USA)

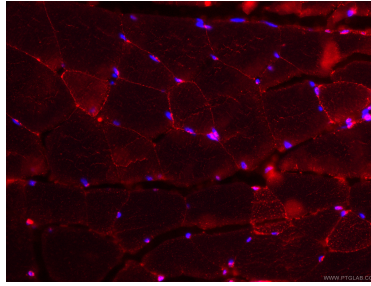
E: proteintech@ptglab.com
W: ptglab.com

This product is exclusively available under Proteintech Group brand and is not available to purchase from any other manufacturer.

Selected Validation Data



Immunofluorescent analysis of (-20°C Ethanol) fixed C2C12 cells using CL594-66286 (MYL3 antibody) at dilution of 1:100.



Immunofluorescent analysis of (4% PFA) fixed mouse skeletal muscle tissue using CL594-66286 (MYL3 antibody) at dilution of 1:100.