

For Research Use Only

# CoraLite®594-conjugated CHCHD2 Monoclonal antibody

Catalog Number: CL594-66302

Featured Product

1 Publications



## Basic Information

### Catalog Number:

CL594-66302

### Size:

100ul , Concentration: 1000 ug/ml by Nanodrop;

Source:

Mouse

### Isotype:

IgG1

### Immunogen Catalog Number:

AG24219

### GenBank Accession Number:

BC003079

### GeneID (NCBI):

51142

### UNIPROT ID:

Q9Y6H1

### Full Name:

coiled-coil-helix-coiled-coil-helix

domain containing 2

### Calculated MW:

151 aa, 16 kDa

### Observed MW:

17 kDa

### Purification Method:

Protein G purification

### CloneNo.:

2G1G10

### Recommended Dilutions:

IF/ICC 1:50-1:500

### Excitation/Emission maxima

wavelengths:

588 nm / 604 nm

## Applications

### Tested Applications:

IF/ICC

### Cited Applications:

IF

### Species Specificity:

human, pig, rat

### Cited Species:

human

### Positive Controls:

IF/ICC : HepG2 cells,

## Background Information

CHCHD2 is a widely expressed 17 kDa mitochondrion-localized protein. CHCHD2 contains a C-terminal CHCH (coiled-coil helix coiled-coil helix) domain. The function of the CHCH domain is not well understood, and the few characterized proteins that harbor this domain have diverse functions. Mutations in CHCHD2 gene have been reported in autosomal dominant Parkinson's disease (ADPD).

## Notable Publications

Author	Pubmed ID	Journal	Application
Neeraja Purandare	36339251	iScience	IF

## Storage

### Storage:

Store at -20°C. Avoid exposure to light. Stable for one year after shipment.

### Storage Buffer:

PBS with 50% Glycerol, 0.05% Proclin300, 0.5% BSA, pH 7.3.

Aliquoting is unnecessary for -20°C storage

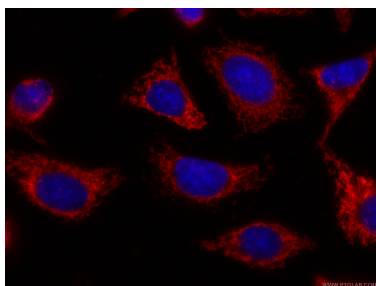
For technical support and original validation data for this product please contact:

T: 1 (888) 4PTGLAB (1-888-478-4522) (toll free in USA), or 1(312) 455-8498 (outside USA)

E: [proteintech@ptglab.com](mailto:proteintech@ptglab.com)  
W: [ptglab.com](http://ptglab.com)

This product is exclusively available under Proteintech Group brand and is not available to purchase from any other manufacturer.

## Selected Validation Data



Immunofluorescent analysis of (-20°C Ethanol) fixed HepG2 cells using CL594-66302 (CHCHD2 antibody) at dilution of 1:100.