

For Research Use Only

CoraLite®594-conjugated Gamma Tubulin Monoclonal antibody

Catalog Number:CL594-66320



Basic Information

Catalog Number:

CL594-66320

Size:

100ul , Concentration: 1000 ug/ml by Nanodrop;

Source:

Mouse

Isotype:

IgG2a

Immunogen Catalog Number:

AG23913

GenBank Accession Number:

BC000619

GeneID (NCBI):

7283

UNIPROT ID:

P23258

Full Name:

tubulin, gamma 1

Calculated MW:

51 kDa

Observed MW:

48-55 kDa

Purification Method:

Protein A purification

CloneNo.:

3F9H8

Recommended Dilutions:

IF/ICC 1:50-1:500

Excitation/Emission maxima wavelengths:

588 nm / 604 nm

Applications

Tested Applications:

IF/ICC, FC (Intra)

Species Specificity:

human, canine

Positive Controls:

IF/ICC : MDCK cells,

Background Information

Gamma tubulin is a member of tubulin superfamily and is a key component required for microtubule nucleation and stabilization. It is concentrated at the pericentriolar material of centrosomes in interphase cells, predominantly on spindle poles in mitotic cells, while found in midbodies during cytokinesis. Overexpression of gamma tubulin has been found in various cancers including breast cancer and gliomas. This antibody can well label the centrosome structure.

Storage

Storage:

Store at -20°C. Avoid exposure to light. Stable for one year after shipment.

Storage Buffer:

PBS with 50% Glycerol, 0.05% Proclin300, 0.5% BSA, pH 7.3.

Aliquoting is unnecessary for -20°C storage

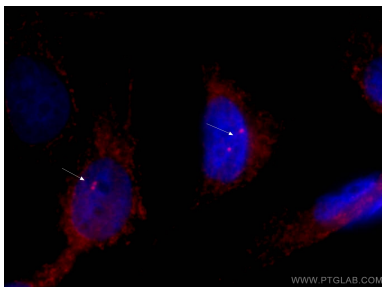
For technical support and original validation data for this product please contact:

T: 1 (888) 4PTGLAB (1-888-478-4522) (toll free in USA), or 1(312) 455-8498 (outside USA)

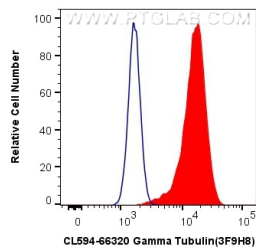
E: proteintech@ptglab.com
W: ptglab.com

This product is exclusively available under Proteintech Group brand and is not available to purchase from any other manufacturer.

Selected Validation Data



Immunofluorescent analysis of (-20°C Ethanol) fixed MDCK cells using CL594-66320 (gamma tubulin antibody) at dilution of 1:50.



1X10⁶ HeLa cells were intracellularly stained with 0.8 ug CoraLite®594 Anti-Human Gamma Tubulin (CL594-66320, Clone:3F9H8) (red), or 0.8 ug CoraLite®594 Mouse IgG2a Isotype Control (C1.18.4) (CL594-65208, Clone: C1.18.4) (blue). Cells were fixed with 4% PFA and permeabilized with Flow Cytometry Perm Buffer (PF00011-C).