

For Research Use Only

# CoraLite®594-conjugated Glutamine Synthetase Monoclonal antibody

Catalog Number:CL594-66323

Featured Product



## Basic Information

Catalog Number:

CL594-66323

Size:

100ul , Concentration: 1000 ug/ml by Nanodrop;

Source:

Mouse

Isotype:

IgG1

Immunogen Catalog Number:

AG6309

GenBank Accession Number:

BC011700

GeneID (NCBI):

2752

UNIPROT ID:

P15104

Full Name:

glutamate-ammonia ligase (glutamine synthetase)

Calculated MW:

374 aa, 42 kDa

Purification Method:

Protein G purification

CloneNo.:

1B6G4

Recommended Dilutions:

IF-P 1:50-1:500

Excitation/Emission maxima wavelengths:

588 nm / 604 nm

## Applications

Tested Applications:

IF-P, FC (Intra)

Species Specificity:

human, mouse, rat

Positive Controls:

IF-P : mouse brain tissue,

## Background Information

GLUL(Glutamine synthetase) is also named as GS, GLNS and belongs to the glutamine synthetase family. This enzyme has 2 functions: it catalyzes the production of glutamine and 4-aminobutanoate (gamma-aminobutyric acid, GABA), the latter in a pyridoxal phosphate-independent manner. By similarity, Essential for proliferation of fetal skin fibroblasts(PMID:18662667). Defects in GLUL are the cause of congenital systemic glutamine deficiency (CSGD). Organismal glutamine production is augmented secondary to an increase in the activity of glutamine synthetase in the lung and skeletal muscle(PMID:7630137). The antibody is conjugated with CL594, Ex/Em 593 nm/614 nm.

## Storage

Storage:

Store at -20°C. Avoid exposure to light. Stable for one year after shipment.

Storage Buffer:

PBS with 50% Glycerol, 0.05% Proclin300, 0.5% BSA, pH 7.3.

Aliquoting is unnecessary for -20°C storage

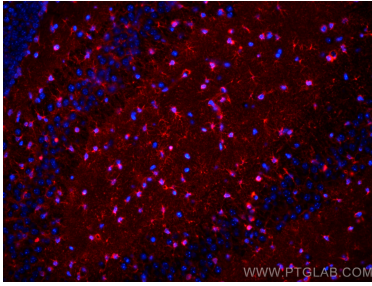
For technical support and original validation data for this product please contact:

T: 1 (888) 4PTGLAB (1-888-478-4522) (toll free in USA), or 1(312) 455-8498 (outside USA)

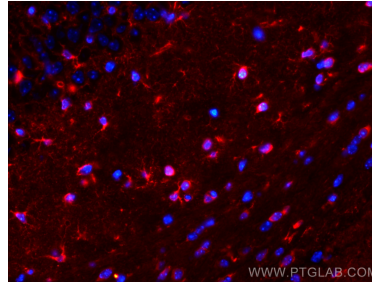
E: [proteintech@ptglab.com](mailto:proteintech@ptglab.com)  
W: [ptglab.com](http://ptglab.com)

This product is exclusively available under Proteintech Group brand and is not available to purchase from any other manufacturer.

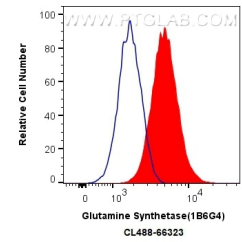
## Selected Validation Data



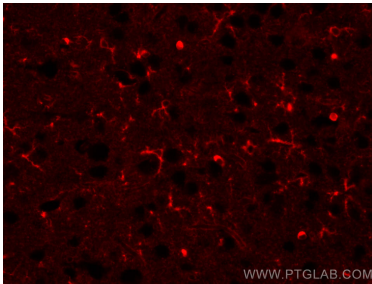
Immunofluorescent analysis of (4% PFA) fixed mouse brain tissue using CoraLite®594 Glutamine Synthetase antibody (CL594-66323, Clone: 1B6G4) at dilution of 1:200.



Immunofluorescent analysis of (4% PFA) fixed mouse brain tissue using CoraLite®594 Glutamine Synthetase antibody (CL594-66323, Clone: 1B6G4) at dilution of 1:200.



1X10<sup>6</sup> HepG2 cells were intracellularly stained with 0.8 ug CoraLite®594 Anti-Human Glutamine Synthetase (CL594-66323, Clone: 1B6G4) (red), or 0.8 ug CoraLite®594 Mouse IgG1 Isotype Control (MOPC-21) (CL594-65124, Clone: MOPC-21) (blue). Cells were fixed with 4% PFA and permeabilized with Flow Cytometry Perm Buffer (PF00011-C).



Immunofluorescent analysis of (4% PFA) fixed mouse brain tissue using CoraLite®594 Glutamine Synthetase antibody (CL594-66323-2, Clone: 1B6G4) at dilution of 1:200.