

For Research Use Only

# CoraLite®594-conjugated Annexin A1 Monoclonal antibody

Catalog Number: CL594-66344

Featured Product



## Basic Information

Catalog Number:

CL594-66344

Size:

100ul , Concentration: 1000 ug/ml by Nanodrop;

Source:

Mouse

Isotype:

IgG1

Immunogen Catalog Number:

AG17273

GenBank Accession Number:

BC001275

GeneID (NCBI):

301

UNIPROT ID:

P04083

Full Name:

annexin A1

Calculated MW:

346 aa, 39 kDa

Observed MW:

35 kDa

Purification Method:

Protein G purification

CloneNo.:

1E1B7

Recommended Dilutions:

IF/ICC 1:50-1:500

Excitation/Emission maxima wavelengths:

588 nm / 604 nm

## Applications

Tested Applications:

IF/ICC, FC (Intra)

Species Specificity:

human, mouse

Positive Controls:

IF/ICC : A549 cells,

## Background Information

ANXA1, also named as ANX1, LPC1 and p35, belongs to the annexin family. It is a member of the annexin family of Ca<sup>2+</sup>-binding and phospholipidbinding proteins, and it is particularly abundant in various populations of peripheral blood leukocytes. ANXA1 regulates phospholipase A2 activity. It seems to bind from two to four calcium ions with high affinity. ANXA1 is a pleiotrophic protein produced by many cell types including peripheral blood leucocytes.

## Storage

Storage:

Store at -20°C. Avoid exposure to light. Stable for one year after shipment.

Storage Buffer:

PBS with 50% Glycerol, 0.05% Proclin300, 0.5% BSA, pH 7.3.

Aliquoting is unnecessary for -20°C storage

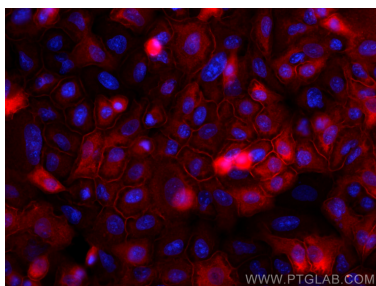
For technical support and original validation data for this product please contact:

T: 1 (888) 4PTGLAB (1-888-478-4522) (toll free in USA), or 1(312) 455-8498 (outside USA)

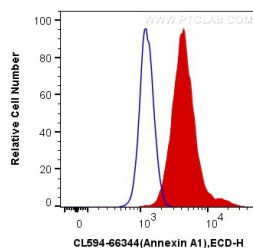
E: [proteintech@ptglab.com](mailto:proteintech@ptglab.com)  
W: [ptglab.com](http://ptglab.com)

This product is exclusively available under Proteintech Group brand and is not available to purchase from any other manufacturer.

## Selected Validation Data



Immunofluorescent analysis of (-20°C Methanol) fixed A549 cells using Coralite®594 Annexin A1 antibody (CL594-66344, Clone: 1E1B7) at dilution of 1:200.



1X10<sup>6</sup> K-562 cells were intracellularly stained with 0.4 ug Coralite®594 Anti-Human Annexin A1 (CL594-66344, Clone:1E1B7) (red), or 0.4 ug Mouse IgG1 Isotype Control (CL594-66360, Clone: T1F8D3F10) (blue). Cells were fixed with 4% PFA and permeabilized with Flow Cytometry Perm Buffer (PF00011-C).