

For Research Use Only

CoraLite®594-conjugated CAPRIN1 Monoclonal antibody

Catalog Number:CL594-66352



Basic Information

Catalog Number:

CL594-66352

Size:

100ul , Concentration: 1000 ug/ml by Nanodrop;

Source:

Mouse

Isotype:

IgG1

Immunogen Catalog Number:

AG7413

GenBank Accession Number:

BC001731

GeneID (NCBI):

4076

UNIPROT ID:

Q14444

Full Name:

cell cycle associated protein 1

Calculated MW:

78 kDa

Observed MW:

116 kDa

Purification Method:

Protein G purification

CloneNo.:

6B10F11

Recommended Dilutions:

IF/ICC 1:400-1:1600

Excitation/Emission maxima wavelengths:

588 nm / 604 nm

Applications

Tested Applications:

IF/ICC, FC (Intra)

Species Specificity:

human, mouse, rat

Positive Controls:

IF/ICC : HeLa cells,

Background Information

CAPRIN1(Caprin-1) is a cytoplasmic phosphoprotein which may regulate the transport and translation of mRNAs of proteins involved in synaptic plasticity in neurons and cell proliferation and migration in multiple cell types. Its levels, except in the brain, are tightly correlated with cellular proliferation. Suppression of expression of human Caprin-1 resulted in slowing of the proliferation rate, which suggests its essential for normal cellular proliferation.

Storage

Storage:

Store at -20°C. Avoid exposure to light. Stable for one year after shipment.

Storage Buffer:

PBS with 50% Glycerol, 0.05% Proclin300, 0.5% BSA, pH 7.3.

Aliquoting is unnecessary for -20°C storage

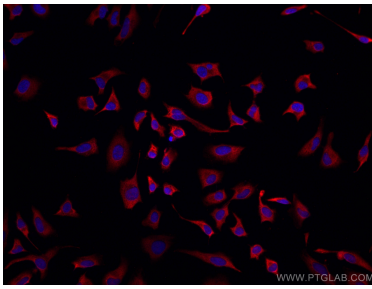
For technical support and original validation data for this product please contact:

T: 1 (888) 4PTGLAB (1-888-478-4522) (toll free in USA), or 1(312) 455-8498 (outside USA)

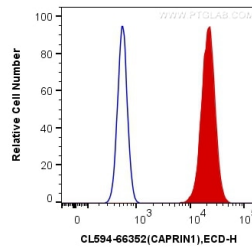
E: proteintech@ptglab.com
W: ptglab.com

This product is exclusively available under Proteintech Group brand and is not available to purchase from any other manufacturer.

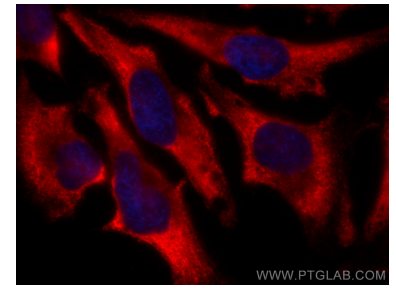
Selected Validation Data



Immunofluorescent analysis of (-20°C Ethanol) fixed HeLa cells using CoraLite®594-conjugated CAPRIN1 antibody (CL594-66352, Clone: 6B10F11) at dilution of 1:100.



1X10⁶ NIH/3T3 cells were intracellularly stained with 0.4 ug CoraLite®594 Anti-Human CAPRIN1 (CL594-66352, Clone:6B10F11) (red), or 0.4 ug Mouse IgG1 Isotype Control (CL594-66360, Clone: T1F8D3F10) (blue). Cells were fixed with 4% PFA and permeabilized with Flow Cytometry Perm Buffer (PF00011-C).



Immunofluorescent analysis of (-20°C Ethanol) fixed HeLa cells using CoraLite®594 CAPRIN1 antibody (CL594-66352, Clone: 6B10F11) at dilution of 1:800.