

For Research Use Only

CoraLite®594-conjugated CBLB Monoclonal antibody



Catalog Number:CL594-66353

Basic Information

| | | |
|---|--|---|
| Catalog Number: CL594-66353 | GenBank Accession Number: BC032851 | Purification Method: Protein A purification |
| Size: 100ul , Concentration: 1000 µg/ml by Nanodrop; | GeneID (NCBI): 868 | CloneNo.: 2D3A2 |
| Source: Mouse | Full Name: Cas-Br-M (murine) ecotropic retroviral transforming sequence b | Recommended Dilutions: 1:50-1:500 |
| Isotype: IgG3 | Calculated MW: 982 aa, 109 kDa | Excitation/Emission maxima wavelengths: 593 nm / 614 nm |
| Immunogen Catalog Number: AG18757 | Observed MW: 110 kDa | |

Applications

Tested Applications:
IF

Species Specificity:
human, mouse, pig, rat

Positive Controls:
IF : RAW 264.7 cells, U2OS cells

Background Information

CBLB(E3 ubiquitin-protein ligase CBL-B) is also known as RNF56 and plays a necessary role to prevent the inappropriate activation of NF-B in response to lipopolysaccharide and to polymicrobial sepsis. CBLB can be phosphorylated on tyrosine and serine residues upon TCR or BCR activation, and upon various types of cell stimulation.. It also has a crucial role in the prevention of chronic inflammation and autoimmunity. This protein has 3 isoforms produced by alternative splicing.

Storage

Storage:
Store at -20°C. Avoid exposure to light. Stable for one year after shipment.

Storage Buffer:
PBS with 50% Glycerol, 0.05% Proclin300, 0.5% BSA, pH 7.3.

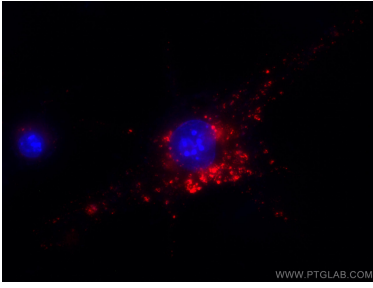
Aliquoting is unnecessary for -20°C storage

*** 20ul sizes contain 0.1% BSA

For technical support and original validation data for this product please contact:
T: 1 (888) 4PTGLAB (1-888-478-4522) (toll free in USA), or 1(312) 455-8498 (outside USA)
E: proteintech@ptglab.com
W: ptglab.com

This product is exclusively available under Proteintech Group brand and is not available to purchase from any other manufacturer.

Selected Validation Data



Immunofluorescent analysis of (-20°C Ethanol) fixed RAW 264.7 cells using CoraLite®594 CBLB antibody (CL594-66353, Clone: 2D3A2) at dilution of 1:100. DAPI (blue).