

For Research Use Only

# CoraLite®594 Mouse IgG1 Isotype Control (1F8D3)

Catalog Number:CL594-66360-1



## Basic Information

Catalog Number:

CL594-66360-1

GenBank Accession Number:

GeneID (NCBI):

Purification Method:

Protein G purification

Size:

100ug, 200 µg/ml

Full Name:

CloneNo.:

1F8D3

Source:

Mouse

Excitation/Emission maxima wavelengths:

588 nm / 604 nm

Isotype:

IgG1

## Applications

Tested Applications:

FC

Species Specificity:

megathura crenulata

## Background Information

This antibody is used as the isotype control of mouse IgG1 (Kappa). It can be used as the isotype control in Flow Cytometry, Immuno-Precipitation and other experiments. The immunogen of this antibody is Keyhole Limpet Hemocyanin (KLH).

## Storage

Storage:

Store at 2-8°C. Avoid exposure to light. Stable for one year after shipment.

Storage Buffer:

PBS with 0.09% sodium azide and 0.5% BSA.

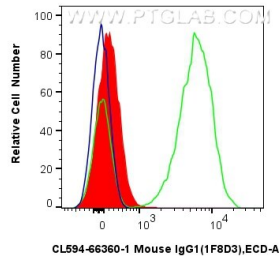
For technical support and original validation data for this product please contact:

T: 1 (888) 4PTGLAB (1-888-478-4522) (toll free in USA), or 1(312) 455-8498 (outside USA)

E: [proteintech@ptglab.com](mailto:proteintech@ptglab.com)  
W: [ptglab.com](http://ptglab.com)

This product is exclusively available under Proteintech Group brand and is not available to purchase from any other manufacturer.

## Selected Validation Data



1x10<sup>6</sup> human PBMCs were surface stained with 5 ul CoraLite®594 Mouse IgG1 Isotype Control (1F8D3) (CL594-66360-1, Clone:1F8D3) (red), or CoraLite® Plus 594 Anti-Human CD3 (UCHT1) (CL594-65151, Clone: UCHT1) (green), or unstained (blue). Cells were not fixed. Lymphocytes were gated.