

For Research Use Only

CoraLite®594-conjugated PGRMC1 Monoclonal antibody



Catalog Number:CL594-66372

Featured Product

Basic Information

Catalog Number: CL594-66372	GenBank Accession Number: BC034238	Purification Method: Protein G purification
Size: 100ul , Concentration: 1000 µg/ml by Nanodrop;	GeneID (NCBI): 10857	CloneNo.: 1C10D11
Source: Mouse	Full Name: progesterone receptor membrane component 1	Recommended Dilutions: IF 1:50-1:500
Isotype: IgG1	Calculated MW: 195 aa, 22 kDa	Excitation/Emission maxima wavelengths: 593 nm / 614 nm
Immunogen Catalog Number: AG3643	Observed MW: 25-27 kDa	

Applications

Tested Applications: IF	Positive Controls: IF : human ovary tumor tissue,
Species Specificity: human, mouse, rat, pig	

Background Information

Progesterone receptor membrane component 1 (PGRMC1) is a member of a multi-protein progesterone-binding complex. However, PGRMC1 shares homology with cytochrome b5-related proteins rather than hormone receptors (PMID: 18992768). It is a heme binding protein with binding sites for Src homology (SH2) and SH3 domain-containing proteins (PMID: 17583495). PGRMC1 is overexpressed in a variety of cancers, and thus represents an important biomarker for cancer progression and a potential target for anticancer drugs (PMID: 21730960). In nonmalignant tissues, PGRMC1 is highly expressed in the liver and kidney (PMID: 9705155; 20164297).

Storage

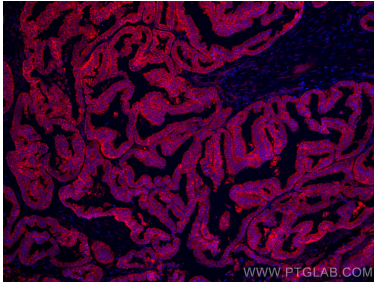
Storage:
Store at -20°C. Avoid exposure to light.
Storage Buffer:
PBS with 50% Glycerol, 0.05% Proclin300, 0.5% BSA, pH 7.3.
Aliquoting is unnecessary for -20°C storage

*** 20ul sizes contain 0.1% BSA

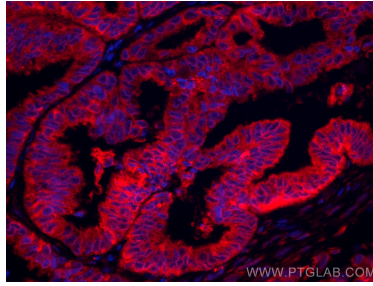
For technical support and original validation data for this product please contact:
T: 1 (888) 4PTGLAB (1-888-478-4522) (toll free in USA), or 1(312) 455-8498 (outside USA)
E: proteintech@ptglab.com
W: ptglab.com

This product is exclusively available under Proteintech Group brand and is not available to purchase from any other manufacturer.

Selected Validation Data



Immunofluorescent analysis of (4% PFA) fixed human ovary tumor tissue using CoraLite®594 PGRMC1 antibody (CL594-66372, Clone: 1C10D11) at dilution of 1:200.



Immunofluorescent analysis of (4% PFA) fixed human ovary tumor tissue using CoraLite®594 PGRMC1 antibody (CL594-66372, Clone: 1C10D11) at dilution of 1:200.