

For Research Use Only

CoraLite®594-conjugated TUBB3-specific Monoclonal antibody



Catalog Number: CL594-66375

2 Publications

Basic Information

Catalog Number: CL594-66375	GenBank Accession Number: NM_001197181	Purification Method: Protein G purification
Size: 100ul , Concentration: 1000 µg/ml by Nanodrop;	GeneID (NCBI): 10381	CloneNo.: 1F8G10
Source: Mouse	Full Name: tubulin, beta 3	Recommended Dilutions: WB 1:1000-1:6000 IF 1:50-1:500
Isotype: IgG1	Calculated MW: 55 kDa	Excitation/Emission maxima wavelengths: 588 nm / 604 nm

Applications

Tested Applications: FC (Intra), IF, WB	Positive Controls:
Cited Applications: IF, IHC	WB : Neuro-2a cells,
Species Specificity: human, mouse, rat	IF : mouse brain tissue,
Cited Species: mouse	

Background Information

TUBB3, the class III β tubulin or Tuj1, is selectively expressed in testis and neurons of the central and peripheral nervous system. It has been widely used as a marker for neurons. Aberrant expression of TUBB3 has also been found in various tumors of non-neural origin and can be used as a biomarker for cancer aggressiveness and a marker for the tendency to respond poorly to chemotherapy. This antibody is specific to TUBB3 but not cross-react with other tubulin isoforms. And the antibody is conjugated with CL594, Ex/Em 593 nm/614 nm.

Notable Publications

Author	Pubmed ID	Journal	Application
Nao Iguchi	35332157	Sci Rep	IF
Yuki Shindo	35427599	Exp Cell Res	IHC

Storage

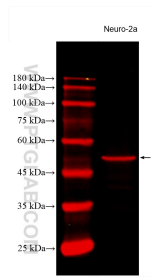
Storage:
Store at -20°C. Avoid exposure to light. Stable for one year after shipment.
Storage Buffer:
PBS with 50% Glycerol, 0.05% Proclin300, 0.5% BSA, pH 7.3.
Aliquoting is unnecessary for -20°C storage

*** 20ul sizes contain 0.1% BSA

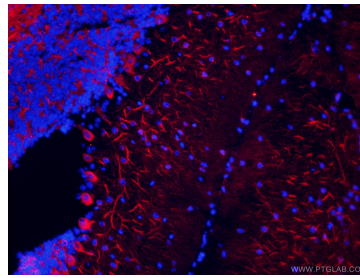
For technical support and original validation data for this product please contact:
T: 1 (888) 4PTGLAB (1-888-478-4522) (toll free in USA), or 1(312) 455-8498 (outside USA)
E: proteintech@ptglab.com
W: ptglab.com

This product is exclusively available under Proteintech Group brand and is not available to purchase from any other manufacturer.

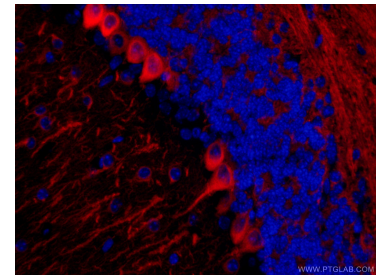
Selected Validation Data



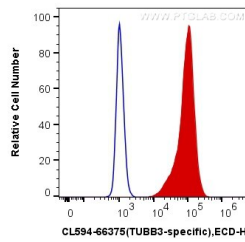
Neuro-2a lysates were subjected to SDS PAGE followed by western blot with CL594-66375 (TUBB3-specific antibody) at dilution of 1:3000 incubated at room temperature for 1.5 hours.



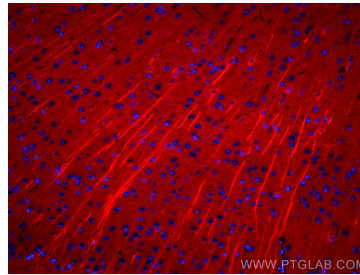
Immunofluorescent analysis of (4% PFA) fixed mouse brain tissue using CL594-66375 (TUBB3-specific antibody) at dilution of 1:50.



Immunofluorescent analysis of (4% PFA) fixed mouse brain tissue using CL594-66375 (TUBB3-specific antibody) at dilution of 1:50.



1X10⁶ SH-SY5Y cells were intracellularly stained with 0.4 ug CoraLite®594 Anti-Human TUBB3-specific (CL594-66375, Clone:1F8G10) (red), or 0.4 ug Mouse IgG1 Isotype Control (CL594-66360, Clone: T1F8D3F10) (blue). Cells were fixed with 4% PFA and permeabilized with Flow Cytometry Perm Buffer (PF00011-C).



Immunofluorescent analysis of (4% PFA) fixed mouse brain tissue using CoraLite®594 TUBB3-specific antibody (CL594-66375, Clone: 1F8G10) at dilution of 1:200.