

For Research Use Only

CoraLite®594-conjugated PADI2 Monoclonal antibody



Catalog Number:CL594-66386

Basic Information

Catalog Number: CL594-66386	GenBank Accession Number: BC009701	Purification Method: Protein A purification
Size: 100ul , Concentration: 818 µg/ml by Nanodrop;	GeneID (NCBI): 11240	CloneNo.: 2D8C12
Source: Mouse	Full Name: peptidyl arginine deiminase, type II	Recommended Dilutions: IF 1:50-1:500
Isotype: IgG2b	Calculated MW: 665 aa, 75 kDa	Excitation/Emission maxima wavelengths: 588 nm / 604 nm
Immunogen Catalog Number: AG17612		

Applications

Tested Applications: FC (Intra), IF	Positive Controls: IF : human breast cancer tissue, HeLa cells
Species Specificity: human, mouse, rat	

Background Information

PADI2, also named as KIAA0994, PDI2, PAD-H19 and PAD2(Peptidylarginine deiminase II), belongs to the protein arginine deiminase family. It catalyzes the deimination of arginine residues of proteins. PADI2 may play a regulatory role in the expression of lactation related genes via histone citrullination during diestrus (PMID:20668670). PADI2 has two isoforms with MW 75 kDa and 49 kDa. This antibody is conjugated with CL594, Ex/Em 593 nm/614 nm.

Storage

Storage:
Store at -20°C. Avoid exposure to light. Stable for one year after shipment.
Storage Buffer:
PBS with 50% Glycerol, 0.05% Proclin300, 0.5% BSA, pH 7.3.
Aliquoting is unnecessary for -20°C storage

*** 20ul sizes contain 0.1% BSA

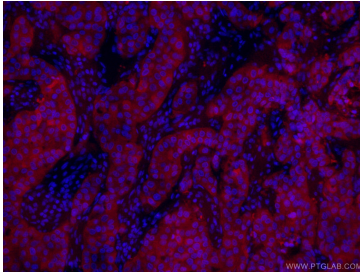
For technical support and original validation data for this product please contact:

T: 1 (888) 4PTGLAB (1-888-478-4522) (toll free
in USA), or 1(312) 455-8498 (outside USA)

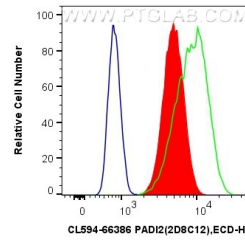
E: proteintech@ptglab.com
W: ptglab.com

This product is exclusively available under Proteintech Group brand and is not available to purchase from any other manufacturer.

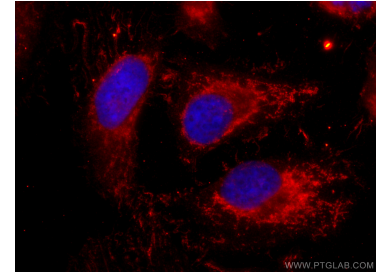
Selected Validation Data



Immunofluorescent analysis of (4% PFA) fixed human breast cancer tissue using CL594-66386 (PADI2 antibody) at dilution of 1:50.



1×10^6 HeLa cells were intracellularly stained with 0.8 μ g CoraLite[®]594 Anti-Human PADI2 (CL594-66386, Clone:2D8C12) (red), or 0.8 μ g CoraLite[®]594 Mouse IgG2b Isotype Control (MPC-11) (CL594-65128, Clone: MPC-11) (blue). Cells were fixed with 4% PFA and permeabilized with Flow Cytometry Perm Buffer (PF00011-C).



Immunofluorescent analysis of (-20°C Ethanol) fixed HeLa cells using CoraLite[®]594 PADI2 antibody (CL594-66386, Clone: 2D8C12) at dilution of 1:200.