

For Research Use Only

CoraLite®594-conjugated LAP3 Monoclonal antibody

Catalog Number:CL594-66417



Basic Information

Catalog Number: CL594-66417	GenBank Accession Number: BC065564	Purification Method: Protein G purification
Size: 100ul , Concentration: 1000 ug/ml by Nanodrop;	GeneID (NCBI): 51056	CloneNo.: 1B11B8
Source: Mouse	UNIPROT ID: P28838	Recommended Dilutions: IF/ICC 1:50-1:500
Isotype: IgG1	Full Name: leucine aminopeptidase 3	Excitation/Emission maxima wavelengths: 588 nm / 604 nm
Immunogen Catalog Number: AG6300	Calculated MW: 56 kDa	
	Observed MW: 56 kDa	

Applications

Tested Applications: IF/ICC	Positive Controls: IF/ICC : HeLa cells,
Species Specificity: human, mouse, rat, pig	

Background Information

LAP3 (Leucine aminopeptidase 3) is also named as LAPEP, PEPS (peptidase S) and belongs to the peptidase M17 family. It can catalyze the removal of unsubstituted N-terminal amino-acids from various peptides and be presumably involved in the processing and regular turnover of intracellular proteins. PEPS is found in a wide variety of tissues and cultured cells but not in red cells and skin. The enzyme can utilize several di-, tri-, and tetrapeptides as substrates and is the slowest migrating of the peptidases after electrophoresis (PMID:689684). LAP3 has two isoforms with MW of 52 and 56 kDa.

Storage

Storage:
Store at -20°C. Avoid exposure to light. Stable for one year after shipment.
Storage Buffer:
PBS with 50% Glycerol, 0.05% Proclin300, 0.5% BSA, pH 7.3.
Aliquoting is unnecessary for -20°C storage

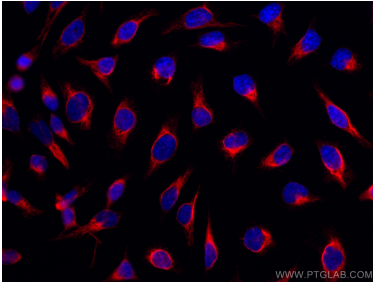
For technical support and original validation data for this product please contact:

T: 1 (888) 4PTGLAB (1-888-478-4522) (toll free
in USA), or 1(312) 455-8498 (outside USA)

E: proteintech@ptglab.com
W: ptglab.com

This product is exclusively available under Proteintech Group brand and is not available to purchase from any other manufacturer.

Selected Validation Data



Immunofluorescent analysis of (-20°C Methanol) fixed HeLa cells using CoraLite@594 LAP3 antibody (CL594-66417, Clone: 1B11B8) at dilution of 1:100. DAPI (blue).