

For Research Use Only

# CoraLite®594-conjugated Calsequestrin 2 Monoclonal antibody

Catalog Number:CL594-66419



## Basic Information

<b>Catalog Number:</b> CL594-66419	<b>GenBank Accession Number:</b> BC022288	<b>Purification Method:</b> Protein A purification
<b>Size:</b> 100ul , Concentration: 1000 ug/ml by Nanodrop;	<b>GeneID (NCBI):</b> 845	<b>CloneNo.:</b> 1C10A1
<b>Source:</b> Mouse	<b>UNIPROT ID:</b> O14958	<b>Recommended Dilutions:</b> IF-P 1:50-1:500
<b>Isotype:</b> IgG2a	<b>Full Name:</b> calsequestrin 2 (cardiac muscle)	<b>Excitation/Emission maxima wavelengths:</b> 588 nm / 604 nm
<b>Immunogen Catalog Number:</b> AG13246	<b>Calculated MW:</b> 46 kDa	
	<b>Observed MW:</b> 50 kDa	

## Applications

<b>Tested Applications:</b> IF-P	<b>Positive Controls:</b> IF-P : mouse heart tissue,
<b>Species Specificity:</b> human, rat, pig, mouse	

## Background Information

Calsequestrin (CASQ) is a Ca<sup>2+</sup>-binding protein present primarily in junctional sarcoplasmic reticulum of skeletal and cardiac muscle; the cardiac form (CASQ2) is encoded by a separate gene. The primary role of CASQ2 is buffering of the sarcoplasmic reticulum Ca<sup>2+</sup> ions, but another role for CASQ2 has emerged recently: CASQ2 regulates the open probability of ryanodine receptor 2 (RyR2). Mutations in CASQ2 cause stress-induced polymorphic ventricular tachycardia, also referred to as catecholaminergic polymorphic ventricular tachycardia 2 (CPVT2), a disease characterized by bidirectional ventricular tachycardia that may lead to cardiac arrest.

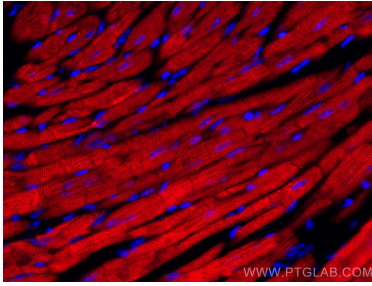
## Storage

**Storage:**  
Store at -20°C. Avoid exposure to light. Stable for one year after shipment.  
**Storage Buffer:**  
PBS with 50% Glycerol, 0.05% Proclin300, 0.5% BSA, pH 7.3.  
**Aliquoting is unnecessary for -20°C storage**

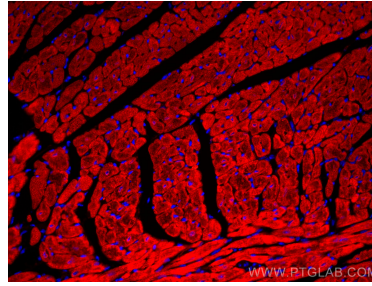
For technical support and original validation data for this product please contact:  
T: 1 (888) 4PTGLAB (1-888-478-4522) (toll free in USA), or 1(312) 455-8498 (outside USA)  
E: [proteintech@ptglab.com](mailto:proteintech@ptglab.com)  
W: [ptglab.com](http://ptglab.com)

This product is exclusively available under Proteintech Group brand and is not available to purchase from any other manufacturer.

## Selected Validation Data



Immunofluorescent analysis of (4% PFA) fixed mouse heart tissue using CoraLite®594 Calsequestrin 2 antibody (CL594-66419, Clone: 1C10A1 ) at dilution of 1:200.



Immunofluorescent analysis of (4% PFA) fixed mouse heart tissue using CoraLite®594 Calsequestrin 2 antibody (CL594-66419, Clone: 1C10A1 ) at dilution of 1:200.