

For Research Use Only

CoraLite®594-conjugated LDHB Monoclonal antibody

Catalog Number:CL594-66425



Basic Information

Catalog Number: CL594-66425	GenBank Accession Number: BC002362	Purification Method: Protein G purification
Size: 100ul , Concentration: 1000 ug/ml by Nanodrop;	GeneID (NCBI): 3945	CloneNo.: 5E9G1
Source: Mouse	UNIPROT ID: P07195	Recommended Dilutions: IF/ICC 1:50-1:500
Isotype: IgG1	Full Name: lactate dehydrogenase B	Excitation/Emission maxima wavelengths: 588 nm / 604 nm
Immunogen Catalog Number: AG6605	Calculated MW: 36 kDa	
	Observed MW: 35 kDa	

Applications

Tested Applications: IF/ICC	Positive Controls: IF/ICC : HeLa cells,
Species Specificity: human, rat, mouse	

Background Information

LDHB, also named as LDH-H and NY-REN-46, belongs to the LDH/MDH superfamily. And LDH family. It is an enzyme which catalyzes the reversible conversion of lactate and pyruvate, and NAD and NADH, in the glycolytic pathway. It is glycolytic enzymes and it is positively regulated by mTOR.

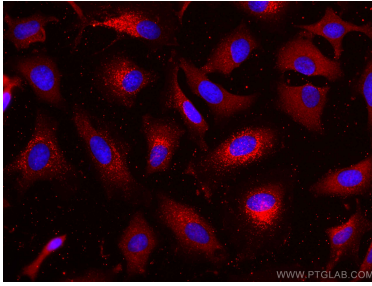
Storage

Storage:
Store at -20°C. Avoid exposure to light. Stable for one year after shipment.
Storage Buffer:
PBS with 50% Glycerol, 0.05% Proclin300, 0.5% BSA, pH 7.3.
Aliquoting is unnecessary for -20°C storage

For technical support and original validation data for this product please contact:
T: 1 (888) 4PTGLAB (1-888-478-4522) (toll free in USA), or 1(312) 455-8498 (outside USA)
E: proteintech@ptglab.com
W: ptglab.com

This product is exclusively available under Proteintech Group brand and is not available to purchase from any other manufacturer.

Selected Validation Data



Immunofluorescent analysis of (-20°C Ethanol) fixed HeLa cells using CoraLite@594 LDHB antibody (CL594-66425, Clone: 5E9G1) at dilution of 1:200.