

For Research Use Only

CoraLite®594-conjugated SLP76 Monoclonal antibody

Catalog Number: CL594-66465



Basic Information

Catalog Number: CL594-66465	GenBank Accession Number: BC016618	Purification Method: Protein G purification
Size: 100ul , Concentration: 1000 ug/ml by Nanodrop;	GeneID (NCBI): 3937	CloneNo.: 4H10B1
Source: Mouse	UNIPROT ID: Q13094	Recommended Dilutions: IF/ICC 1:50-1:500
Isotype: IgG1	Full Name: lymphocyte cytosolic protein 2 (SH2 domain containing leukocyte protein of 76kDa)	Excitation/Emission maxima wavelengths: 588 nm / 604 nm
Immunogen Catalog Number: AG3432	Calculated MW: 533 aa, 60 kDa	

Applications

Tested Applications: IF/ICC, FC (Intra)	Positive Controls: IF/ICC : HeLa cells,
Species Specificity: human	

Background Information

LCP2, also named as SLP76, is an adapter protein that acts as a substrate of the T cell antigen receptor (TCR)-activated protein tyrosine kinase pathway. It contains an N-terminal leucine Zip motif, a tyrosine-rich domain, a proline-rich domain and a C-terminal SH2 domain. It is constitutively associated with the growth factor receptor-bound protein 2 (Grb2)-related adapter protein 2 (Grap2, a.k.a. GADS) through the interaction of its proline residues with one of the SH3 domains of Grap2. SLP76 associates with growth factor receptor bound protein 2 (Grap2), and is thought to play a role TCR-mediated intracellular signal transduction. SLP76 is also expressed by mast cells, and mast cell activation was markedly impaired in SLP76-deficient mice.

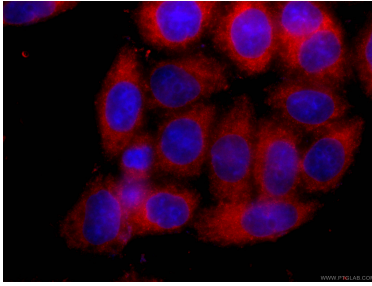
Storage

Storage:
Store at -20°C. Avoid exposure to light. Stable for one year after shipment.
Storage Buffer:
PBS with 50% Glycerol, 0.05% Proclin300, 0.5% BSA, pH 7.3.
Aliquoting is unnecessary for -20°C storage

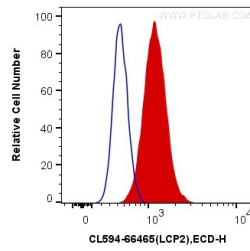
For technical support and original validation data for this product please contact:
T: 1 (888) 4PTGLAB (1-888-478-4522) (toll free in USA), or 1(312) 455-8498 (outside USA)
E: proteintech@ptglab.com
W: ptglab.com

This product is exclusively available under Proteintech Group brand and is not available to purchase from any other manufacturer.

Selected Validation Data



Immunofluorescent analysis of (-20°C Ethanol) fixed HeLa cells using CL594-66465 (SLP76 antibody) at dilution of 1:100.



1X10⁶ Jurkat cells were intracellularly stained with 0.4 ug Coralite®594 Anti-Human SLP76 (CL594-66465, Clone:4H10B1) (red), or 0.4 ug Mouse IgG1 Isotype Control (CL594-66360, Clone: T1F8D3F10) (blue). Cells were fixed with 4% PFA and permeabilized with Flow Cytometry Perm Buffer (PF00011-C).