

For Research Use Only

CoraLite®594-conjugated PYCR1 Monoclonal antibody



Catalog Number:CL594-66510

Basic Information

Catalog Number: CL594-66510	GenBank Accession Number: BC022244	Purification Method: Protein A purification
Size: 100ul , Concentration: 1000 µg/ml by Nanodrop;	GeneID (NCBI): 5831	CloneNo.: 1H2G1
Source: Mouse	Full Name: pyrroline-5-carboxylate reductase 1	Recommended Dilutions: IF 1:50-1:500
Isotype: IgG2a	Calculated MW: 319 aa, 33.8 kDa	Excitation/Emission maxima wavelengths: 588 nm / 604 nm
Immunogen Catalog Number: AG17919	Observed MW: 33 kDa, 35 kDa	

Applications

Tested Applications: FC (Intra), IF	Positive Controls: IF : HeLa cells,
Species Specificity: Human, Mouse, Rat	

Background Information

PYCR1,also named as P5CR1, belongs to the pyrroline-5-carboxylate reductase family. It is a housekeeping enzyme that catalyzes the last step in proline biosynthesis. PYCR1 can utilize both NAD and NADP, but has higher affinity for NAD. It is involved in the cellular response to oxidative stress. Mutation in PYCR1 will cause ARCL type II (ARCL2B). Some mutation will cause DeBary syndrome (DBS) which is characterized by progeroid features, ophthalmological abnormalities, intrauterine growth retardation, and cutis laxa.

Storage

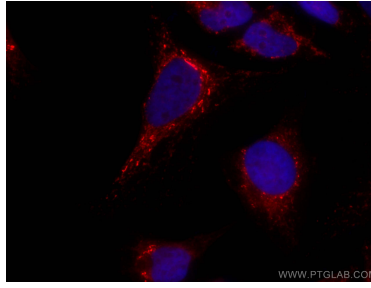
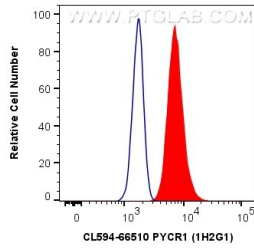
Storage:
Store at -20°C. Avoid exposure to light. Stable for one year after shipment.
Storage Buffer:
PBS with 50% Glycerol, 0.05% Proclin300, 0.5% BSA, pH 7.3.
Aliquoting is unnecessary for -20°C storage

*** 20ul sizes contain 0.1% BSA

For technical support and original validation data for this product please contact:
T: 1 (888) 4PTGLAB (1-888-478-4522) (toll free in USA), or 1(312) 455-8498 (outside USA)
E: proteintech@ptglab.com
W: ptglab.com

This product is exclusively available under Proteintech Group brand and is not available to purchase from any other manufacturer.

Selected Validation Data



1X10⁶ HeLa cells were intracellularly stained with 0.4 ug CoraLite@594 Anti-Human PYCR1 (CL594-66510, Clone:1H2G1) (red), or 0.4 ug Isotype Control. Cells were fixed with 4% PFA and permeabilized with Flow Cytometry Perm Buffer (PF00011-C).

Immunofluorescent analysis of (4% PFA) fixed HeLa cells using CoraLite@594 PYCR1 antibody (CL594-66510, Clone: 1H2G1) at dilution of 1:200.