

For Research Use Only

# CoraLite®594-conjugated WBP2 Monoclonal antibody

Catalog Number:CL594-66585

Featured Product



## Basic Information

Catalog Number:

CL594-66585

GenBank Accession Number:

BC010616

Purification Method:

Protein G purification

Size:

100ul , Concentration: 1000 ug/ml by Nanodrop;

GeneID (NCBI):

23558

CloneNo.:

2B4G7

Source:

Mouse

UNIPROT ID:

Q969T9

Recommended Dilutions:

IF/ICC 1:50-1:500

Isotype:

IgG1

Full Name:

WW domain binding protein 2

Excitation/Emission maxima wavelengths:

588 nm / 604 nm

Immunogen Catalog Number:

AG2661

Calculated MW:

261 aa, 28 kDa

Observed MW:

30-40 kDa

## Applications

Tested Applications:

IF/ICC

Positive Controls:

IF/ICC : HeLa cells,

Species Specificity:

Human

## Storage

Storage:

Store at -20°C. Avoid exposure to light. Stable for one year after shipment.

Storage Buffer:

PBS with 50% Glycerol, 0.05% Proclin300, 0.5% BSA, pH 7.3.

Aliquoting is unnecessary for -20°C storage

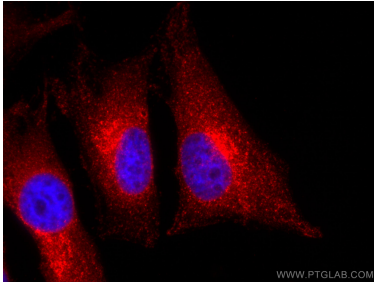
For technical support and original validation data for this product please contact:

T: 1 (888) 4PTGLAB (1-888-478-4522) (toll free in USA), or 1(312) 455-8498 (outside USA)

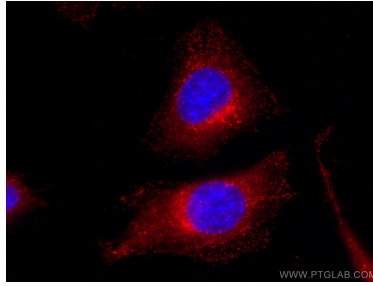
E: [proteintech@ptglab.com](mailto:proteintech@ptglab.com)  
W: [ptglab.com](http://ptglab.com)

This product is exclusively available under Proteintech Group brand and is not available to purchase from any other manufacturer.

## Selected Validation Data



Immunofluorescent analysis of (4% PFA) fixed HeLa cells using CoraLite®594 WBP2 antibody (CL594-66585, Clone: 2B4G7 ) at dilution of 1:200.



Immunofluorescent analysis of (-20°C Ethanol) fixed HeLa cells using CoraLite®594 WBP2 antibody (CL594-66585, Clone: 2B4G7 ) at dilution of 1:200.