

For Research Use Only

CoraLite®594-conjugated RIC8A Monoclonal antibody

Catalog Number:CL594-66625



Basic Information

Catalog Number:

CL594-66625

Size:

100ul , Concentration: 1000 ug/ml by
Nanodrop;

Source:

Mouse

Isotype:

IgG1

Immunogen Catalog Number:

AG1593

GenBank Accession Number:

BC011821

GeneID (NCBI):

60626

UNIPROT ID:

Q9NPQ8

Full Name:

resistance to inhibitors of
cholinesterase 8 homolog A (C.
elegans)

Calculated MW:

60 kDa

Observed MW:

65 kDa

Purification Method:

Protein G purification

CloneNo.:

1E3B11

Recommended Dilutions:

IF-P 1:50-1:500

Excitation/Emission maxima
wavelengths:

588 nm / 604 nm

Applications

Tested Applications:

IF-P

Species Specificity:

Human, Rat, Mouse

Positive Controls:

IF-P : mouse brain tissue,

Background Information

RIC8A, also named as synembryn-A, is a Guanine nucleotide exchange factor (GEF), which can activate some, but not all, G-alpha proteins by exchanging bound GDP for free GTP. It is involved in regulation of microtubule pulling forces during mitotic movement of chromosomes by stimulating G(i)-alpha protein, possibly leading to release G(i)-alpha-GTP and NuMA proteins from the NuMA-GPSM2-G(i)-alpha-GDP complex. RIC8A also acts as an activator for G(q)-alpha (GNAQ) protein by enhancing the G(q)-coupled receptor-mediated ERK activation.

Storage

Storage:

Store at -20°C. Avoid exposure to light. Stable for one year after shipment.

Storage Buffer:

PBS with 50% Glycerol, 0.05% Proclin300, 0.5% BSA, pH 7.3.

Aliquoting is unnecessary for -20°C storage

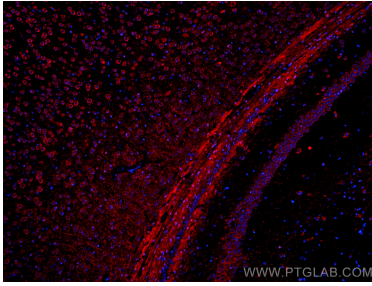
For technical support and original validation data for this product please contact:

T: 1 (888) 4PTGLAB (1-888-478-4522) (toll free
in USA), or 1(312) 455-8498 (outside USA)

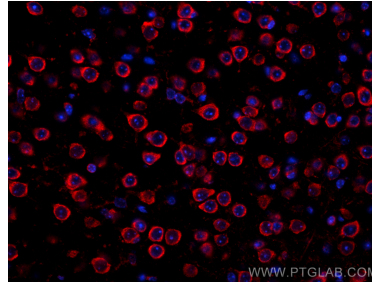
E: proteintech@ptglab.com
W: ptglab.com

This product is exclusively available under Proteintech Group brand and is not available to purchase from any other manufacturer.

Selected Validation Data



Immunofluorescent analysis of (4% PFA) fixed mouse brain tissue using CoraLite®594 RIC8A antibody (CL594-66625, Clone: 1E3B11) at dilution of 1:200.



Immunofluorescent analysis of (4% PFA) fixed mouse brain tissue using CoraLite®594 RIC8A antibody (CL594-66625, Clone: 1E3B11) at dilution of 1:200.