

CoraLite®594-conjugated FAF2 Monoclonal antibody

Catalog Number: **CL594-66629**

Basic Information

Catalog Number: CL594-66629	GenBank Accession Number: BC014001	Purification Method: Protein G purification
Size: 100ul , Concentration: 1000 µg/ml by Nanodrop;	GeneID (NCBI): 23197	CloneNo.: 3H6D2
Source: Mouse	UNIPROT ID: Q96CS3	Recommended Dilutions: IF/ICC 1:50-1:500
Isotype: IgG1	Full Name: Fas associated factor family member 2	Excitation/Emission maxima wavelengths: 588 nm / 604 nm
Immunogen Catalog Number: AG21536	Calculated MW: 445 aa, 53 kDa	
	Observed MW: 51 kDa	

Applications

Tested Applications: IF	Positive Controls: IF/ICC : HEK-293 cells,
Species Specificity: Human, mouse	

Background Information

Protein ETEA (FAF2, or UBXD8) is a homolog to Fas-associated factor 1 (FAF1), which is involved in Fas-mediated apoptosis. ETEA protein directly interacts with and negatively regulates neurofibromin. ETEA contains both UBA and UBX domains and overexpression of ETEA downregulates neurofibromin in human cells. It may play a role in the translocation of terminally misfolded proteins from the endoplasmic reticulum lumen to the cytoplasm and their degradation by the proteasome. ETEA is highly expressed in peripheral blood of patients with atopic dermatitis (AD) compared to normal individuals, and may regulate the resistance to apoptosis that is observed in T cells and eosinophils of AD patients.

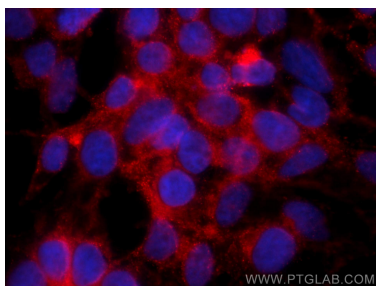
Storage

Storage:
Store at -20°C. Avoid exposure to light. Stable for one year after shipment.
Storage Buffer:
PBS with 50% Glycerol, 0.05% Proclin300, 0.5% BSA, pH 7.3.
Aliquoting is unnecessary for -20°C storage

For technical support and original validation data for this product please contact:
T: 1 (888) 4PTGLAB (1-888-478-4522) (toll free in USA), or 1(312) 455-8498 (outside USA)
E: proteintech@ptglab.com
W: ptglab.com

This product is exclusively available under Proteintech Group brand and is not available to purchase from any other manufacturer.

Selected Validation Data



Immunofluorescent analysis of (4% PFA) fixed HEK-293 cells using CoraLite®594 FAF2 antibody (CL594-66629, Clone: 3H6D2) at dilution of 1:200.