

For Research Use Only

# CoraLite®594-conjugated XRCC2 Monoclonal antibody

Catalog Number:CL594-66652



## Basic Information

<b>Catalog Number:</b> CL594-66652	<b>GenBank Accession Number:</b> BC042137	<b>Purification Method:</b> Protein A purification
<b>Size:</b> 100ul , Concentration: 860 ug/ml by Nanodrop;	<b>GeneID (NCBI):</b> 7516	<b>CloneNo.:</b> 3D9A1
<b>Source:</b> Mouse	<b>UNIPROT ID:</b> O43543	<b>Recommended Dilutions:</b> IF/ICC 1:50-1:500
<b>Isotype:</b> IgG2b	<b>Full Name:</b> X-ray repair complementing defective repair in Chinese hamster cells 2	<b>Excitation/Emission maxima wavelengths:</b> 588 nm / 604 nm
<b>Immunogen Catalog Number:</b> AG14421	<b>Calculated MW:</b> 280 aa, 32 kDa	

## Applications

<b>Tested Applications:</b> IF/ICC, FC (Intra)	<b>Positive Controls:</b> IF/ICC : LO2 cells, HepG2 cells
<b>Species Specificity:</b> human	

## Background Information

XRCC2, also named as DNA repair protein XRCC2, is a 280 amino acid protein, which belongs to the RecA family. XRCC2 is involved in the homologous recombination repair (HRR) pathway of double-stranded DNA, thought to repair chromosomal fragmentation, translocations and deletions. XRCC2 is a part of the Rad21 paralog protein complex BCDX2 which acts in the BRCA1-BRCA2-dependent HR pathway.

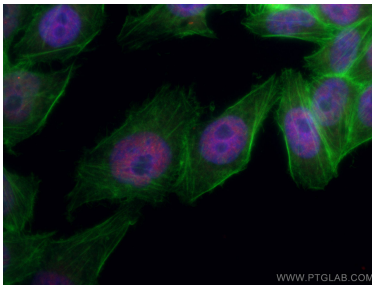
## Storage

**Storage:**  
Store at -20°C. Avoid exposure to light. Stable for one year after shipment.  
**Storage Buffer:**  
PBS with 50% Glycerol, 0.05% Proclin300, 0.5% BSA, pH 7.3.  
**Aliquoting is unnecessary for -20°C storage**

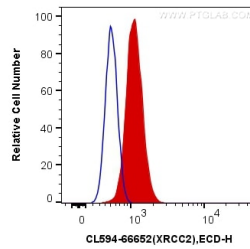
For technical support and original validation data for this product please contact:  
T: 1 (888) 4PTGLAB (1-888-478-4522) (toll free in USA), or 1(312) 455-8498 (outside USA)  
E: [proteintech@ptglab.com](mailto:proteintech@ptglab.com)  
W: [ptglab.com](http://ptglab.com)

This product is exclusively available under Proteintech Group brand and is not available to purchase from any other manufacturer.

## Selected Validation Data



Immunofluorescent analysis of (4% PFA) fixed L02 cells using Coralite®594-conjugated XRCC2 antibody (CL594-66652, Clone: 3D9A1 ) at dilution of 1:100, CL488-Phalloidin (green).



1X10<sup>6</sup> HepG2 cells were intracellularly stained with 0.2 ug Coralite®594 Anti-Human XRCC2 (CL594-66652, Clone:3D9A1 ) (red), or 0.2 ug Mouse IgG2b Isotype Control (CL594-66360-3, Clone: K11B8C4B5) (blue). Cells were fixed and permeabilized with Transcription Factor Staining Buffer Kit (PF00011).