

For Research Use Only

CoraLite®594-conjugated EIF4E Monoclonal antibody

Catalog Number:CL594-66655

Featured Product



Basic Information

Catalog Number:

CL594-66655

Size:

100ul , Concentration: 1000 ug/ml by Nanodrop;

Source:

Mouse

Isotype:

IgG1

Immunogen Catalog Number:

AG27191

GenBank Accession Number:

BC012611

GeneID (NCBI):

1977

UNIPROT ID:

P06730

Full Name:

eukaryotic translation initiation factor 4E

Calculated MW:

29 kDa

Observed MW:

25 kDa

Purification Method:

Protein G purification

CloneNo.:

3C6B9

Recommended Dilutions:

IF/ICC 1:50-1:500

Excitation/Emission maxima wavelengths:

588 nm / 604 nm

Applications

Tested Applications:

IF/ICC, FC (Intra)

Species Specificity:

human, mouse, rat

Positive Controls:

IF/ICC : HepG2 cells,

Background Information

Eukaryotic translation initiation factor 4E(EIF4E) is the rate-limiting part of mRNA 7-methyl guanosine cap-binding component of the translation initiation complex eIF4F. The other subunits of EIF4F are a 50-kD polypeptid, termed EIF4A and a 220-kD polypeptid EIF4G. EIF4E mediates the binding to the mRNA cap then repress the translation. Due to the increasing expression of c-Myc in the oncogene, EIF4E's activity is enhance.

Storage

Storage:

Store at -20°C. Avoid exposure to light. Stable for one year after shipment.

Storage Buffer:

PBS with 50% Glycerol, 0.05% Proclin300, 0.5% BSA, pH 7.3.

Aliquoting is unnecessary for -20°C storage

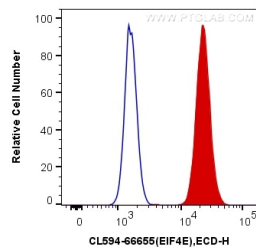
For technical support and original validation data for this product please contact:

T: 1 (888) 4PTGLAB (1-888-478-4522) (toll free in USA), or 1(312) 455-8498 (outside USA)

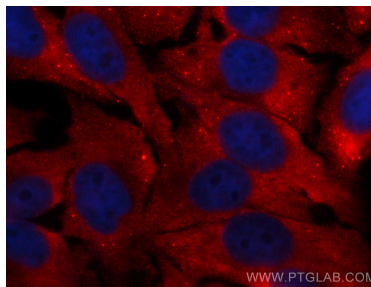
E: proteintech@ptglab.com
W: ptglab.com

This product is exclusively available under Proteintech Group brand and is not available to purchase from any other manufacturer.

Selected Validation Data



1X10⁶ HepG2 cells were intracellularly stained with 0.4 ug CoraLite® 594 Anti-Human EIF4E (CL594-66655, Clone:3C6B9) (red), or 0.4 ug Mouse IgG1 Isotype Control (CL594-66360, Clone: T1F8D3F10) (blue). Cells were fixed with 4% PFA and permeabilized with Flow Cytometry Perm Buffer (PF00011-C).



Immunofluorescent analysis of (-20°C Ethanol) fixed HepG2 cells using CoraLite® 594 EIF4E antibody (CL594-66655, Clone: 3C6B9) at dilution of 1:200.