

For Research Use Only

# CoraLite®594-conjugated PDIA6 Monoclonal antibody

Catalog Number:CL594-66669



## Basic Information

Catalog Number:

CL594-66669

Size:

100ul , Concentration: 1000 ug/ml by  
Nanodrop;

Source:

Mouse

Isotype:

IgG1

Immunogen Catalog Number:

AG27608

GenBank Accession Number:

BC001312

GeneID (NCBI):

10130

UNIPROT ID:

Q15084

Full Name:

protein disulfide isomerase family A,  
member 6

Calculated MW:

48 kDa, 54 kDa

Observed MW:

54 kDa

Purification Method:

Protein G purification

CloneNo.:

1G2D4

Recommended Dilutions:

IF/ICC 1:50-1:500

Excitation/Emission maxima

wavelengths:

588 nm / 604 nm

## Applications

Tested Applications:

IF/ICC, FC (Intra)

Species Specificity:

human, mouse, rat

Positive Controls:

IF/ICC : HepG2 cells,

## Background Information

PDIA6(Protein disulfide-isomerase A6) is also named as ERP5, P5, TXNDC7 and belongs to the protein disulfide isomerase family. It is one of the endoplasmic reticulum (ER) resident proteins that catalyze formation, reduction, and isomerization of disulfide bonds in proteins and are thought to play a role in folding of disulfide-bonded proteins (PMID:7590364). It has 2 isoforms produced by alternative splicing. This antibody is specific to PDIA6.

## Storage

Storage:

Store at -20°C. Avoid exposure to light. Stable for one year after shipment.

Storage Buffer:

PBS with 50% Glycerol, 0.05% Proclin300, 0.5% BSA, pH 7.3.

Aliquoting is unnecessary for -20°C storage

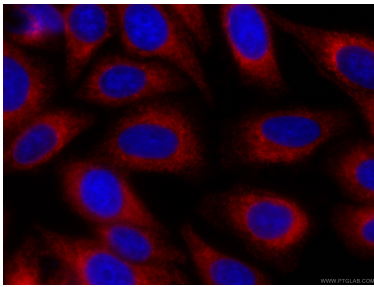
For technical support and original validation data for this product please contact:

T: 1 (888) 4PTGLAB (1-888-478-4522) (toll free  
in USA), or 1(312) 455-8498 (outside USA)

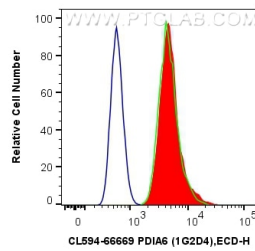
E: [proteintech@ptglab.com](mailto:proteintech@ptglab.com)  
W: [ptglab.com](http://ptglab.com)

This product is exclusively available under Proteintech Group brand and is not available to purchase from any other manufacturer.

## Selected Validation Data



Immunofluorescent analysis of (-20°C Ethanol) fixed HepG2 cells using CL594-66669 (PDIA6 antibody) at dilution of 1:100.



1X10<sup>6</sup> HepG2 cells were intracellularly stained with 0.4 ug CoraLite®594 Anti-Human PDIA6 (CL594-66669, Clone:1G2D4) (red), or 0.4 ug CoraLite®594 Mouse IgG1 Isotype Control (MOPC-21) (CL594-65124, Clone: MOPC-21) (blue). Cells were fixed with 4% PFA and permeabilized with Flow Cytometry Perm Buffer (PF00011-C).