

For Research Use Only

# CoraLite®594-conjugated ASF/SF2 Monoclonal antibody

Catalog Number:CL594-66671



## Basic Information

<b>Catalog Number:</b> CL594-66671	<b>GenBank Accession Number:</b> BC010264	<b>Purification Method:</b> Protein G purification
<b>Size:</b> 100ul , Concentration: 1000 ug/ml by Nanodrop;	<b>GeneID (NCBI):</b> 6426	<b>CloneNo.:</b> 1A6C5
<b>Source:</b> Mouse	<b>UNIPROT ID:</b> Q07955	<b>Recommended Dilutions:</b> IF/ICC 1:50-1:500
<b>Isotype:</b> IgG1	<b>Full Name:</b> splicing factor, arginine/serine-rich 1	<b>Excitation/Emission maxima wavelengths:</b> 588 nm / 604 nm
<b>Immunogen Catalog Number:</b> AG3626	<b>Calculated MW:</b> 248 aa, 28 kDa	
	<b>Observed MW:</b> 32 kDa, 28 kDa, 22 kDa	

## Applications

<b>Tested Applications:</b> IF/ICC	<b>Positive Controls:</b> IF/ICC : HepG2 cells,
<b>Species Specificity:</b> Human, mouse, rat	

## Background Information

SFRS1, also named as ASF, SF2, SF2P33, SFRS1 and ASF-1, belongs to the splicing factor SR family. It plays a role in preventing exon skipping, ensuring the accuracy of splicing and regulating alternative splicing. SFRS1 interacts with other spliceosomal components, via the RS domains, to form a bridge between the 5'- and 3'-splice site binding components, U1 snRNP and U2AF. Isoform ASF-2 and isoform ASF-3 act as splicing repressors. This antibody can recognize all the 3 isoforms(28kd,33kd and 22kd) of SFRS1.

## Storage

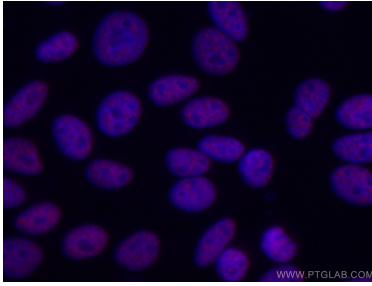
**Storage:**  
Store at -20°C. Avoid exposure to light. Stable for one year after shipment.  
**Storage Buffer:**  
PBS with 50% Glycerol, 0.05% Proclin300, 0.5% BSA, pH 7.3.  
**Aliquoting is unnecessary for -20°C storage**

For technical support and original validation data for this product please contact:  
T: 1 (888) 4PTGLAB (1-888-478-4522) (toll free in USA), or 1(312) 455-8498 (outside USA)  
E: [proteintech@ptglab.com](mailto:proteintech@ptglab.com)  
W: [ptglab.com](http://ptglab.com)

This product is exclusively available under Proteintech Group brand and is not available to purchase from any other manufacturer.

---

## Selected Validation Data



Immunofluorescent analysis of (4% PFA) fixed HepG2 cells using Coralite®594-conjugated ASF/SF2 antibody (CL594-66671, Clone: 1A6C5 ) at dilution of 1:100.