

For Research Use Only

CoraLite®594-conjugated CALD1 Monoclonal antibody

Catalog Number: CL594-66693

Featured Product



Basic Information

Catalog Number:

CL594-66693

GenBank Accession Number:

BC040354

Purification Method:

Protein A purification

Size:

100ul , Concentration: 1000 ug/ml by 800

GeneID (NCBI):

800

CloneNo.:

1E1C11

Nanodrop;

UNIPROT ID:

Q05682

Recommended Dilutions:

IF/ICC 1:50-1:500

Source:

Mouse

Full Name:

caldesmon 1

Excitation/Emission maxima wavelengths:

588 nm / 604 nm

Isotype:

IgG2b

Calculated MW:

538 aa, 63 kDa

Immunogen Catalog Number:

AG13676

Observed MW:

70 kDa~75 kDa

Applications

Tested Applications:

IF/ICC, FC (Intra)

Positive Controls:

IF/ICC : HepG2 cells,

Species Specificity:

human, mouse, rat

Storage

Storage:

Store at -20°C. Avoid exposure to light. Stable for one year after shipment.

Storage Buffer:

PBS with 50% Glycerol, 0.05% Proclin300, 0.5% BSA, pH 7.3.

Aliquoting is unnecessary for -20°C storage

For technical support and original validation data for this product please contact:

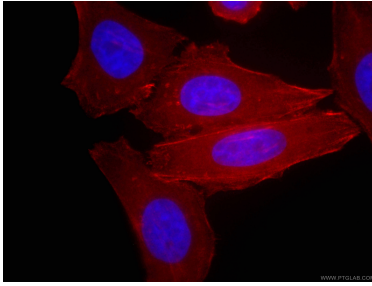
T: 1 (888) 4PTGLAB (1-888-478-4522) (toll free in USA), or 1(312) 455-8498 (outside USA)

E: proteintech@ptglab.com

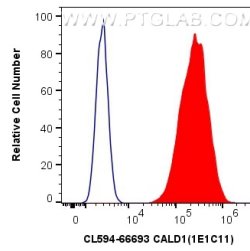
W: ptglab.com

This product is exclusively available under Proteintech Group brand and is not available to purchase from any other manufacturer.

Selected Validation Data



Immunofluorescent analysis of (4% PFA) fixed HepG2 cells using CL594-66693 (CALD1 antibody) at dilution of 1:100.



1X10⁶ HeLa cells were intracellularly stained with 0.8 ug CoraLite®594 Anti-Human CALD1 (CL594-66693, Clone:1E1C11) (red), or 0.8 ug CoraLite®594 Mouse IgG2b Isotype Control (MPC-11) (CL594-65128, Clone: MPC-11) (blue). Cells were fixed with 4% PFA and permeabilized with Flow Cytometry Perm Buffer (PF00011-C).