

For Research Use Only

CoraLite®594-conjugated ACE2 Monoclonal antibody



Catalog Number:CL594-66699

Basic Information

Catalog Number: CL594-66699	GenBank Accession Number: BC048094	Purification Method: Protein G purification
Size: 100ul , Concentration: 1000 µg/ml by Nanodrop;	GeneID (NCBI): 59272	CloneNo.: 2F12A4
Source: Mouse	Full Name: angiotensin I converting enzyme (peptidyl-di-peptidase A) 2	Recommended Dilutions: IF 1:50-1:500
Isotype: IgG1	Calculated MW: 805 aa, 92 kDa	Excitation/Emission maxima wavelengths: 593 nm/614 nm
Immunogen Catalog Number: AG15554	Observed MW:	

Applications

Tested Applications: IF	Positive Controls: IF : human kidney tissue,
Species Specificity: Human	

Background Information

ACE2 (Angiotensin-converting enzyme 2), also named as ACEH, is a zinc metalloprotease of the ACE family and a critical regulator of the reninangiotensin system. ACE2 has a more restricted tissue distribution than ACE, being found predominantly in the heart, kidneys, and testes although low levels have been detected in a variety of tissues (PMID:15983030). ACE2 has been shown to be a functional receptor of the human coronaviruses SARS-CoV and SARS-CoV-2 (PMID: 32142651). The expression level and expression pattern of human ACE2 in different tissues might be critical for the susceptibility, symptoms, and outcome of 2019-nCoV/SARS-CoV-2 infection (PMID: 32133153). It can be used as a potential therapeutic target of SARS-CoV-2 (PMID: 32125455). The calculated molecular weight of ACE2 is 92kDa but it migrates to 120kDa due to N-glycosylation (PMID:16166094). Sometimes, several cleaved fragments can also be detected as 75kDa, 50 kDa or 37kDa (PMID: 29561187, 22009550, 30759273). It has 2 isoforms produced by alternative splicing. This antibody is specific to ACE2.

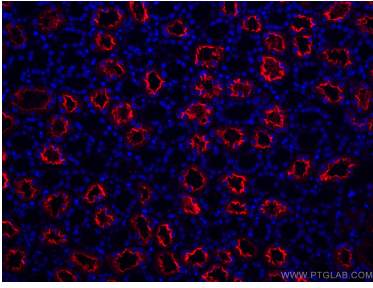
Storage

Storage:
Store at -20°C. Avoid exposure to light. Stable for one year after shipment.
Storage Buffer:
PBS with 50% Glycerol, 0.05% Proclin300, 0.5% BSA, pH 7.3.
Aliquoting is unnecessary for -20°C storage

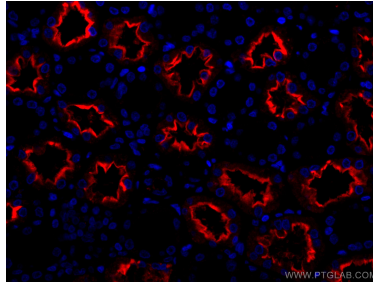
For technical support and original validation data for this product please contact:
T: 1 (888) 4PTGLAB (1-888-478-4522) (toll free in USA), or 1(312) 455-8498 (outside USA)
E: proteintech@ptglab.com
W: ptglab.com

This product is exclusively available under Proteintech Group brand and is not available to purchase from any other manufacturer.

Selected Validation Data



Immunofluorescent analysis of (4% PFA) fixed human kidney tissue using CoraLite®594 ACE2 antibody (CL594-66699, Clone: 2F12A4) at dilution of 1:200.



Immunofluorescent analysis of (4% PFA) fixed human kidney tissue using CoraLite®594 ACE2 antibody (CL594-66699, Clone: 2F12A4) at dilution of 1:200.