

For Research Use Only

# CoraLite®594-conjugated ATG13 Monoclonal antibody

Catalog Number:CL594-66708



## Basic Information

Catalog Number: CL594-66708	GenBank Accession Number: BC001331	Purification Method: Protein G purification
Size: 100ul , Concentration: 1000 ug/ml by Nanodrop;	GeneID (NCBI): 9776	CloneNo.: 1C3A7
Source: Mouse	UNIPROT ID: O75143	Recommended Dilutions: IF/ICC 1:50-1:500
Isotype: IgG1	Full Name: KIAA0652	Excitation/Emission maxima wavelengths: 588 nm / 604 nm
Immunogen Catalog Number: AG12968	Calculated MW: 57 kDa	
	Observed MW: 57 kDa	

## Applications

Tested Applications: IF/ICC	Positive Controls: IF/ICC : HeLa cells,
Species Specificity: Human, Mouse, Rat, Pig	

## Background Information

ATG13 is one component protein of the ULK1 complex which is required for autophagosome formation and mitophagy. ATG13 has two nutrient regulatory phosphorylation sites and the phosphorylation status of ATG13 affect regulation of autophagy by modulating enzyme activity and cellular localization of ULK1. Besides, it has been reported the nonautophagic function of ATG13 on cardiac development for ATG13-deficient embryos show myocardial growth defects.(PMID:27387056, 26801615, 26644405)

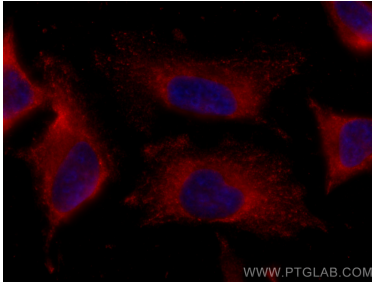
## Storage

**Storage:**  
Store at -20°C. Avoid exposure to light. Stable for one year after shipment.  
**Storage Buffer:**  
PBS with 50% Glycerol, 0.05% Proclin300, 0.5% BSA, pH 7.3.  
Aliquoting is unnecessary for -20°C storage

For technical support and original validation data for this product please contact:  
T: 1 (888) 4PTGLAB (1-888-478-4522) (toll free in USA), or 1(312) 455-8498 (outside USA)  
E: [proteintech@ptglab.com](mailto:proteintech@ptglab.com)  
W: [ptglab.com](http://ptglab.com)

This product is exclusively available under Proteintech Group brand and is not available to purchase from any other manufacturer.

## Selected Validation Data



Immunofluorescent analysis of (-20°C Methanol) fixed HeLa cells using Coralite®594 ATG13 antibody (CL594-66708, Clone: 1C3A7 ) at dilution of 1:200.