

For Research Use Only

CoraLite®594-conjugated GSTP1 Monoclonal antibody



Catalog Number: CL594-66715

Featured Product

Basic Information

Catalog Number: CL594-66715	GenBank Accession Number: BC010915	Purification Method: Protein G purification
Size: 100ul , Concentration: 1000 µg/ml by Nanodrop;	GeneID (NCBI): 2950	CloneNo.: 2D4A6
Source: Mouse	Full Name: glutathione S-transferase pi 1	Recommended Dilutions: IF 1:50-1:500
Isotype: IgG1	Calculated MW: 210 aa, 23 kDa	Excitation/Emission maxima wavelengths: 593 nm / 614 nm
Immunogen Catalog Number: AG8880	Observed MW: 23 kDa	

Applications

Tested Applications: IF	Positive Controls: IF : HepG2 cells,
Species Specificity: Human, Rat	

Background Information

Storage

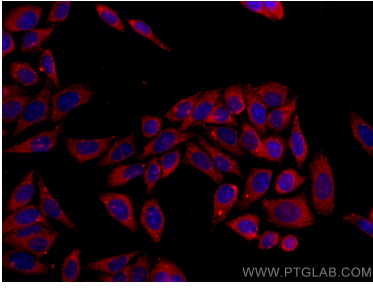
Storage:
Store at -20°C. Avoid exposure to light.
Storage Buffer:
PBS with 50% Glycerol, 0.05% Proclin300, 0.5% BSA, pH 7.3.
Aliquoting is unnecessary for -20°C storage

*** 20ul sizes contain 0.1% BSA

For technical support and original validation data for this product please contact:
T: 1 (888) 4PTGLAB (1-888-478-4522) (toll free in USA), or 1(312) 455-8498 (outside USA) E: proteintech@ptglab.com
W: ptglab.com

This product is exclusively available under Proteintech Group brand and is not available to purchase from any other manufacturer.

Selected Validation Data



Immunofluorescent analysis of (-20°C Methanol) fixed HepG2 cells using CoraLite®594 GSTP1 antibody (CL594-66715, Clone: 2D4A6) at dilution of 1:200.