

For Research Use Only

# CoraLite®594-conjugated RBX1 Monoclonal antibody

Catalog Number:CL594-66716



## Basic Information

Catalog Number:

CL594-66716

Size:

100ul , Concentration: 1000 ug/ml by  
Nanodrop;

Source:

Mouse

Isotype:

IgG1

Immunogen Catalog Number:

AG7005

GenBank Accession Number:

BC001466

GeneID (NCBI):

9978

UNIPROT ID:

P62877

Full Name:

ring-box 1

Calculated MW:

12 kDa

Observed MW:

12-15 kDa

Purification Method:

Protein G purification

CloneNo.:

1F4D9

Recommended Dilutions:

IF/ICC 1:50-1:500

Excitation/Emission maxima  
wavelengths:

588 nm / 604 nm

## Applications

Tested Applications:

IF/ICC

Species Specificity:

Human, Mouse, Rat

Positive Controls:

IF/ICC : HeLa cells,

## Background Information

RBX1(RING-box protein 1) is also named as RNF75, ROC1 and is a requisite component of the multi- subunit SCF family E3s36-40. It mediates the ubiquitination and subsequent proteasomal degradation of target proteins, including proteins involved in cell cycle progression, signal transduction, transcription and transcription-coupled nucleotide excision repair.

## Storage

Storage:

Store at -20°C. Avoid exposure to light. Stable for one year after shipment.

Storage Buffer:

PBS with 50% Glycerol, 0.05% Proclin300, 0.5% BSA, pH 7.3.

Aliquoting is unnecessary for -20°C storage

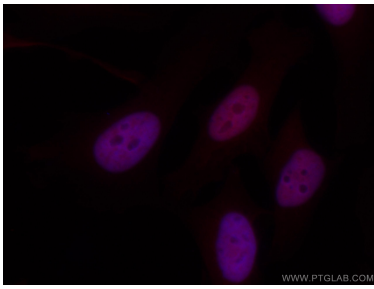
For technical support and original validation data for this product please contact:

T: 1 (888) 4PTGLAB (1-888-478-4522) (toll free  
in USA), or 1(312) 455-8498 (outside USA)

E: [proteintech@ptglab.com](mailto:proteintech@ptglab.com)  
W: [ptglab.com](http://ptglab.com)

This product is exclusively available under Proteintech Group brand and is not available to purchase from any other manufacturer.

## Selected Validation Data



Immunofluorescent analysis of (4% PFA) fixed HeLa cells using Coralite® 594 RBX1 antibody (CL594-66716, Clone: 1F4D9 ) at dilution of 1:100. DAPI (blue).